

# BERITA ENSEARCH

*Building capacity in the environmental field as an enabler to Malaysian professionals growth*

## Editor's note

Dear Members,

Welcome once again to another edition of Berita ENSEARCH. On behalf of the society I wish all members good health and happiness of heart. Kudos for persevering through three quarters of a most difficult and eventful year. Mental wellness is being appreciated now more than ever before and I believe that is key to a sustainable and straight-thinking society. Do take the time out to celebrate your successes thus far and give yourself a pat on the back for what you have achieved.

This time our contributor Resha Hani Ahmad discusses the issue of air pollution. In September the World Health Organisation (WHO) released their [new Global Air Quality Guidelines \(AQGs\)](#). There is clearer evidence than before that polluted air damages human health, [even causing blindness](#) (WHO's last update of the guidelines was in 2005). As a health risk factor air pollution is now on par with smoking tobacco and unhealthy eating. The consequence of breathing in tainted air is millions of years of healthy life lost and 7 million lives annually.

Representing the ever-growing number of Environment, Social and Health (ESH) practitioners in Malaysia, Sam Au Choon Wai discusses his experience as a professional not only grappling with but maximizing new Environmental, Social and Governance (ESG) targets for advanced outcomes. He gives us a look into the complex set of challenges that one faces being in this dynamic space - meeting not only commercial goals, but also sustainability and financial reporting as well as operations and project schedules. We may be in lockdown still but education and skills training has continued through our webinars and online training. We have more planned for the year so do check our Calendar of Events on pages 16-17. Until next time, take care and stay safe!

**NATASHA NORDIN MANAN**

## in this issue

### 1) FEATURED MEMBER

- ***Dr Fatehah Mohd Omar***
- ***EMS Progress Sdn Bhd***

**page 02**

### 2) FEATURED ARTICLES

- ***Are you a Sustainable ESH Practitioner***
- ***We are Unaware that Air Pollution is a***

***Silent Killer***

**page 04**

### 3) ENSEARCH COVID19 PUBLIC AWARENESS

**page 12**

### 4) PAST EVENTS & ACTIVITIES

**page 14**

### 5) ENSEARCH CALENDAR 2021

**page 17**

### 6) ENSEARCH COUNCIL MEMBERS

**Page 20**

### 7) ENSEARCH SECRETARIAT

**page 21**



## NOTE TO MEMBERS

Members are encouraged to write to [admin@ensearch.org](mailto:admin@ensearch.org) in the event of changing contact details. Corporate Members are recommended to provide more than one contact (email address) to facilitate better dissemination of ENSEARCH information.

# FEATURED MEMBER

## Dr Fatehah Mohd Omar (ENSEARCH Active Member)

Ts. Dr. Fatehah Mohd Omar is one of ENSEARCH's active members. She has been with ENSEARCH since 2008. She is an expert in water and wastewater treatment, together with water monitoring. She holds a doctoral degree in Environmental Science from University of Geneva, Switzerland since 2015.



*Dr Fatehah with her beloved family*

Dr Fatehah was born on 27th February 1981, in Mississippi, United States. She attended her high school at St George's Girls School, Penang, before furthering her study at Universiti Sains Malaysia (USM). At USM, she obtained Bachelor of Technology in Environmental Technology, and MSc in Environmental Technology.

As an Academician, she started her leisure educator since high school as a tuition teacher. During her final year in Bachelor Degree, she kicked off tertiary education as a tutor. In 2012, during the Permanent Mission of Malaysia to United Nation in Geneva, she taught French to the Malaysian Diplomats. Dr Fatehah also is an experience trainer. She has been organizing environmental trainings to several companies including Komag, the world's leading

manufacturer of magnetic thin-film disks for computer hard drives.



*Dr Fatehah with her research team & students*

Dr Fatehah is a very active researcher. During her career, she has completed more than 20 researches, published over 50 journals and book chapters.

Some of the researches are, 'The Behaviour of Nanoparticle Pollutants in Water and Wastewater Treatment Via Application of Zeta Potential and Hydrodynamic Diameter Technique Study,' 'The Dispersion and Pollutant Behavior in River Basins using Total Maximum Daily Load (TMDL) approach and Qual2K Modelling', and many more.

***"Knowledge enlightens the mind and humbles the soul"***

**- Dr Fatehah Omar**

# FEATURED MEMBER

## EMS PROGRESS SDN BHD (ENSEARCH Corporate Member)

EMS Progress Sdn Bhd (EMSP) is a Bumiputera environmental consultancy firm based in Kuching. It has embarked its journey since 2007 and since then has putting their footprints not only in Sarawak, but Sabah as well. EMSP currently has their HQ office in Kuching and other offices located in Miri, Sarawak and Kota Kinabalu, Sabah.



*EMS Progress Sdn Bhd team*

Desirous to be a One-Stop Centre for client who is looking for wide range of environmental consultancy services, EMSP is registered with both federal and state's environmental governing body. EMSP holds a registration with Ministry of Finance, *Unit Pendaftaran Kontraktor dan Juruperunding* (UPKJ, Sarawak), Natural Resources and Environment Board (NREB, Sarawak), Environment Protection Department (EPD, Sabah) and Petroliam Nasional Berhad (PETRONAS). Commitment to quality and excellence delivery, EMSP obtained accreditation of both ISO 9001:2015 and ISO 14001:2015.

EMSP is offering a wide range of environmental consultancy services including Environmental Impact Assessment (EIA), Social Impact Assessment (SIA), Heritage Impact Assessment (HIA), Traffic Impact Assessment (TIA), Landscape Design and Assessment, Waste Management, Post-EIA Environmental Monitoring for both onshore and offshore, Environmental Auditing and Compliance Reporting for Department of Safety and Health (DOSH). Over the last decade, EMSP has undertaken various projects of infrastructure buildings, roads, highways, bridges, transmission lines, substations,

landfills, agriculture, waterfront, landscapes, and monitoring work at oil and gas facilities. One of the prominent projects that granted to EMSP was commissioned by Sarawak Metro Sdn Bhd whereby 'Environment, Social and Heritage Impact Assessment (ESHIA)' was conducted for the Proposed Automated Rapid Transit (ART) in Kuching, the first hydrogen-powered in Malaysia.

EMSP advocates to keep-safe the natural resources and minimize its adverse impacts by implementing a structured planning and focus on social environmentally - sensitive approach. It is our belief that development, people and nature should complement and strengthen each other, not deteriorating one another.



*EMS Progress Sdn Bhd, working on waste characterization study and offshore sediment sampling*

# FEATURED ARTICLE

## *Are You a Sustainable ESH Practitioner?*

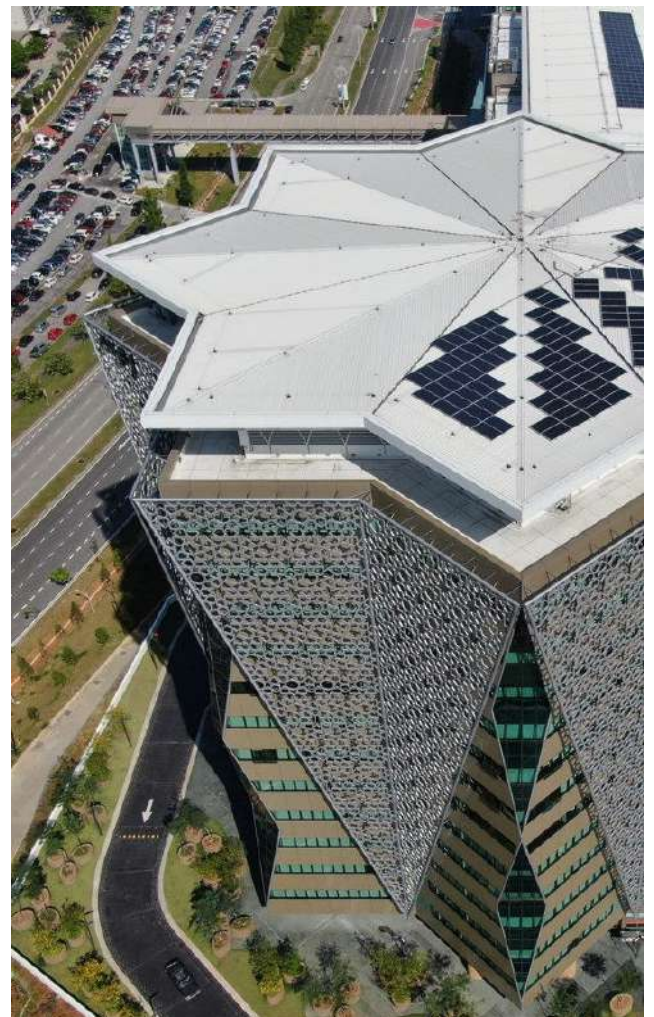
*Author: Sam Au Choon Wai*



### Or just an ESH practitioner supporting in sustainability?

Let's us all look around at the trend. Many organisations of varying sizes have shifted their capitalism desire for shareholders alone, to benefiting society. We start to see in recent years that many construction organizations have declared strongly of their corporations' purposes in sustainable growth. Keybuilders like Sunway, Gamuda, IJM, Sime Darby, etc. have transformed their investment towards values creation for stakeholders. Where in the past these organisations thrived on wealth generation for shareholders as principal objective, now they are being evaluated based on environmental, social, and governance (ESG) impacts.

To begin with, strategic interventions have been made in corporate diversification. Guided by the UN Sustainable Development Goals, adopting the core principles and values where safety and environmental concerns are of utmost priorities in construction management. The adoption of these ESG targets is praiseworthy. While some targets are achieved, I must say that it brings me struggles as an ESH practitioner. It is a valid argument that ESH division is a non-revenue generating department. Transition in ESH division is imminent because businesses will still be evaluated based on financial metrics such as revenue and profit.



*Architectural masterpiece that is inspired by the traditional songket concept intricately woven together to form a beautiful star-shaped building.*

# FEATURED ARTICLE

## *Are You a Sustainable ESH Practitioner?*

*Author: Sam Au Choon Wai*



### Or just an ESH practitioner supporting in sustainability?

Being in supporting role, ESH division is more focused on environmental, safety and health compliance than on profitability. Confronting with the need to contribute to an organisation's revenue base, ESH management is now tied to the newfound ESG targets. Though ESH division doesn't translate its non-financial approaches directly into income output, this division is crucial to the growth and execution of the ESG.

### 3 GOOD HEALTH AND WELL-BEING



### 6 CLEAN WATER AND SANITATION



### What Budget Problem?

ESH practitioners are employed, as mandated by legal requirements, to perform what they are principally skilled in, by ensuring organisations' compliance and management systems are on track. This profession is employed and rewarded just like others where everyone's performance is based on merits on how a project performed financially.

To protect the interest of shareholders, every single aspect in a project management relates to tangible monetary value such as profit and loss, return on investment, return on capital. No matter what your budgetary allocation is, it is still a tough act for a non-revenue generating division with limited fund to manoeuvre.

### 12 RESPONSIBLE CONSUMPTION AND PRODUCTION



# FEATURED ARTICLE

## *Are You a Sustainable ESH Practitioner?*

*Author: Sam Au Choon Wai*



### Or just an ESH practitioner supporting in sustainability?

#### Financial Sense

Instead of struggling and being controlled by the budget, attempt yourself to shoulder certain responsibilities and learn few necessary skills in cost saving and resource maximisation. The damning ESH roles in managing the conflicting intangible ESG targets with tangible commercial goals are painful, but possible. There will not be any real transformation, unless integrating ESH practices with ESG goals by consolidating into organisation's financial performance reporting. So, how is it likely that an ESH practitioner be able to maximise ESG values in navigating ESH practices as predominant objective? And at the same time trying to focus on revenue generation? Financial acumen.

#### Would You Like to Have it?

Let's be honest. A project is not only funded by investment capital but also resources that are consumed during the duration of its operation management. I put myself in a uniquely uncomfortable situation where I often forget what my actual roles are - ESH practitioner? Operation management?

What about those sustainability challenges?



*MEWPs are utilised as part of improved work coordination and risk mitigation approach during construction.*

It has never been easy and often felt like a never-ending failure. However, adjusting my

# FEATURED ARTICLE

## ***Are You a Sustainable ESH Practitioner?***

*Author: Sam Au Choon Wai*



### **Or just an ESH practitioner supporting in sustainability?**

roles with financial sense have been positively resulting in much better outcomes. Having financial acumen teaches me to understand how a project is funded and be directly accountable as a revenue-generating functional staff. It allows me to be more efficient and perform better than what I was originally hired for to enhance revenue from this non-profit role.

#### **Education & Experience**

Most times making changes would not be that straightforward and are easier said than done. Experience shows that those decisions that have been made in ESH management can possibly be integrated with financial perspective. Any potential ESH risks and impacts raised from construction management can be properly advocated with better financial sense. While many have demonstrated substantial execution being made in ESG roadmaps,

I believe through integrating financial aspects, prospects of ESH sustainability can be truly achieved. To achieve ESH sustainability, one must start to realise the demands and expectations of shareholders' perspective in construction management. It is beyond the materiality reporting such as consumption reduction, pollution prevention or hazard mitigation. What if ESH sustainability can offer effective and efficient utilisation of financial resources? Imagine the depth of influences on shareholders' confidence when it comes to ESH budgeting and financing.

#### **Money Still Talks..**

It does not need rocket science to grasp that any organisation's survivability is driven by healthy income statement performance. As far as the bottom line is concerned, it is the net income of shareholders' balance sheet in meeting financial obligations when compared to industry peers.

Neither societal contribution nor investment in ESG values. Calculating the ESG values is a monumental task. It involves the values of creation, consumption, and depletion of natural resources which is beyond accounting revenues and expenses.

**"None but ourselves can free our minds."**

**- Bob Marley**

# FEATURED ARTICLE

## *Are You a Sustainable ESH Practitioner?*

*Author: Sam Au Choon Wai*



### Or just an ESH practitioner supporting in sustainability?



*Parcel F (Putrajaya), the RM1.4billion design and build project completed on time by Sunway Construction with outstanding achievements using BIM system.*

The values of resources are calculated directly based on physical capital such as materials, and machinery as well as human capital (e.g. staff competencies, capabilities). There is another category of indirect resources which are expected to be rewarded with intangible financial returns are intellectual capital (e.g. system, process), and relationship capital like reputation and branding.

Current accounting approach could not provide a comprehensive framework for calculating the ESG values in a dynamic environment. Knowing this, it makes little or no difference to the shareholders, as ESG and financial disclosure is not practically integrated. The ESG values remain as missing targets where natural resources are not considered as shared operational capitals. Can ESH practitioner be able to force a firm change on these disclosures not just impacts reporting through emissions and waste generation, but as resource capitals through earning exchange?

### Growth Mindset

Situations have changed now. As we wanted to support broader organisation goals with ESG targets, many ESH practitioners are finding it difficult to adapt. Many organisations continue in search of ESH practitioners with growth mindset. ESH practitioners who embrace growth mindset are those who believe their talents can make a difference in sustainability.

These individuals tend to gain biased advantage in talent race within organisations. They would receive far greater organisational support in their career development.



# FEATURED ARTICLE

## ***Are You a Sustainable ESH Practitioner?***

*Author: Sam Au Choon Wai*



### **Or just an ESH practitioner supporting in sustainability?**

While we admire such individuals, let's not forget or ignore just how much more efforts that they need to put into learning. I wish to have the foresight to transform earlier in the beginning from protecting shareholders' interests towards wider ESG goals as a long term investment in ESHcareer. The needs of a sustainable ESH practitioner are great in an organisation, and it is shockingly scarce to find.

#### About the Author:

Began his ESH journey in Sunway Construction, Sam had gained extensive experience in construction management. Prior to this, he had accomplished numerous impact assessments and due diligence studies as an environmental consultant where his roles covered technical management in various mega projects. Sam is now the Head of Environmental, Safety and Health in Gagasan Nadi Cergas and has overall responsibility for Sustainability, and Compliance. His passion in sustainability to be part of knowledge sharing to complex challenges and connecting with people, can be reached at [choonwai.au@gmail.com](mailto:choonwai.au@gmail.com).

# FEATURED ARTICLE

## ***We're Unaware that Air Pollution is a Silent Killer***

*Author: Resha Hani Ahmad*



Over the past decade, Malaysia has experienced industrial growth and urbanisation, and it aims to become a developed nation by next year.

This process benefited the economy. However, as a consequence, human activities emit particulates and gasses that pollute the air.

To make things worse, the polluted air has been proven to correlate with human health, which subsequently degrades the quality of life. Malaysia has had its fair share of poor air quality episodes.

Air pollution in Malaysia is unique. It is episodic, seasonal and transboundary.

Malaysia's poor air quality was first associated with the haze in 1983, which caused severe disruptions to life. The main cause of haze remained untold.

However, it was attributed to forest fires from neighbouring countries and the combustion of fossil and other fuels by industries, vehicles and households. Since then, haze episodes have reoccurred, with the most recent one this month.

Air pollution is one of the main causes of climate change and has been attributed to killing eight million people worldwide annually.

According to a Universiti Malaya study, Malaysians' perception of air quality is that "it is somewhat polluted, but causes no harm".

This perception has to change as air pollution is a silent killer that penetrates and contaminates our organs, leading to death and diseases.

The World Health Organisation had reported that air pollution caused 6,251 deaths in Malaysia up to 2012.



***Malaysia's poor air quality was first associated with the haze in 1983, which caused severe disruptions to life***

# FEATURED ARTICLE

## *We're Unaware that Air Pollution is a Silent Killer*

*Author: Resha Hani Ahmad*



Air pollution is responsible for one out of every nine deaths in Malaysia, making it one of the top causes of death. The government has foreseen the importance of tackling air pollution.

It was listed in the second and 10th Malaysia Plans. A Clean Air Action Plan (CAAP) was developed in the 9th Malaysia Plan to improve air quality.

At the 21st Technical Working Group and Sub-Regional Ministerial Steering Committee Trans-boundary Haze Pollution meeting recently, Malaysia presented measures taken to prevent haze and open burning.

It has updated the National Haze Action Plan and implemented the National Open Burning Action plan that is expected to reduce haze and air pollution in Southeast Asia.



*A woman, covering her face with her scarf in Putrajaya*

The government has put in efforts to tackle this problem.

However, the awareness among Malaysians of its dangers is still lacking.



*Firefighters extinguish a fire at a peat land forest in Payung Sekaki regency in Pekanbaru, Riau province, a province on Indonesia's Sumatra island*

**ENSEARCH COVID-19  
PUBLIC AWARENES**

# Flu & COVID-19: #StopTheSpread



**COVID-19**  
#KitaTeguhKitaMenang

## TERMA BAHARU

**Lama :**  
**Penjarakan Sosial**

**Baharu :**  
**Penjarakan Fizikal**

**Maksud Sama :**  
**Amalkan jarak 1 meter daripada orang lain**



**JANGAN LEKA ATAU ALPA,  
KITA BELUM MENANG**



Kementerian  
Kesihatan  
Malaysia



MYHEALTHKKM



SCAN ME

[ COVID-19 ]  
#KitaMestiMenang

# AMALKAN PERLINDUNGAN BERGANDA



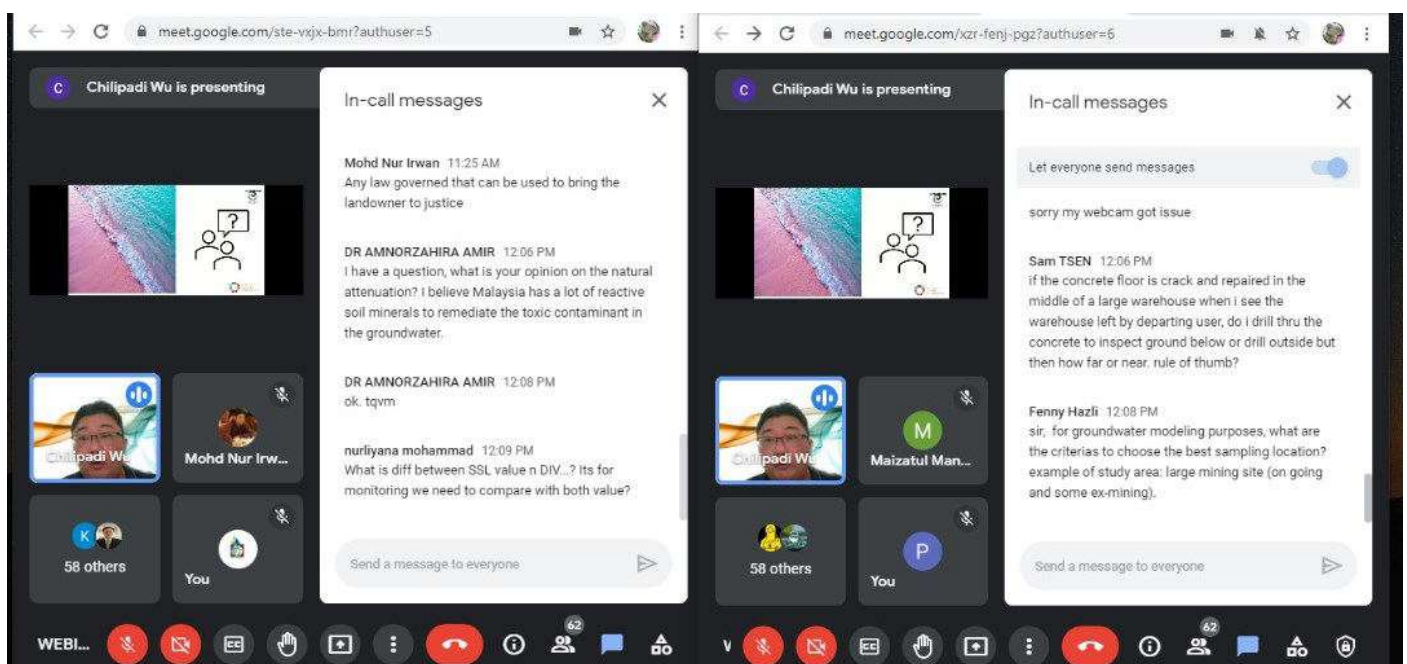
## PUTUSKAN RANTAIAN COVID-19

# PAST EVENTS & ACTIVITIES

## Webinar on 'Soil & Groundwater Issues' by Mr Ng Hon Seng

ENSEARCH has successfully organized a Webinar on 'Soil & Groundwater Issues' on Thursday, 19th August 2021. The free webinar which delivered by Mr Ng Hon Seng has attracted more than 160 people from our members and non-members. ENSEARCH has never host for more than 100 participants for a Webinar before, this is a very proud moment for ENSEARCH.

This two hours Webinar has enabled the participants to gain more knowledge and insights on Contaminated Land Management & Control Guidelines. His talk was well received by those who attended. We would like to express sincere appreciation to all members who took the time and effort to join the Webinar. We thank you!



*Mr Ng Hon Seng during the Webinar. His interactive quiz and activities were excellent and attract more people to join.*

**ENSEARCH is on WHATSAPP [be on OUR MAILING LIST!]**

We update our members and friends via Whatsapp!

Please add our number to your phonebook & send us a message with your name and company and you will be updated regularly!

**ENSEARCH Mobile Number: +6016 278 0191**

Not our Member? Don't worry. You could still be on our mailing list. Please fill in this e-form:

<https://goo.gl/bvtTF7>

# PAST EVENTS & ACTIVITIES

## **Training on Applying ISO 45001 for Risk Management in Avoiding Major Accidents by Dr Subramaniam Karuppanan**

Training on “Applying ISO 45001 for Risk Management in Avoiding Major Accidents “ was held for two days on 25th & 26th August 2021. The very technical training has attracted 20 environmental practitioners. Due to the pandemic Covid-19, the training had to be delivered online. However, Dr Subramaniam with his deep experience, has successfully explained and elaborated the topics smoothly.

The question and answer session was very active with the curious participants asking back to back questions. Even so, Dr Subramaniam managed to answer all the questions accordingly. The training was granted 12 CPD hours from Department of Environment (DOE) and also HRD Corp claimable.



*Some of the participants during Day 1 of training. His interactive quiz and assessment were excellent and participants were also given chances to do presentations.*

**ENSEARCH is on WHATSAPP [be on OUR MAILING LIST!]**

We update our members and friends via Whatsapp!

Please add our number to your phonebook & send us a message with your name and company and you will be updated regularly!

**ENSEARCH Mobile Number: +6016 278 0191**

Not our Member? Don't worry. You could still be on our mailing list. Please fill in this e-form:

<https://goo.gl/bvtTF7>

# PAST EVENTS & ACTIVITIES

## Training on Applying ISO 45001 for Risk Management in Avoiding Major Accidents by Dr Subramaniam Karuppattan



*Group photo taken after Day 2 training ended. Based on the feedbacks given, most participants were amazed with the trainer, Dr Subra Karuppattan's knowledge in ISO45001.*

From feedbacks received, almost half of the participants are not ENSEARCH Members. This proves that the series of quality trainings held by ENSEARCH have successfully reach the environmental practitioners outside ENSEARCH circle. Even for a first timer, this training was enough to convince them to join ENSEARCH trainings again in the future.

ENSEARCH hopes the current situation of pandemic Covid 19 will slowly goes off. With that, more quality trainings can be held physically which at the same time give more benefits to the participants.

### ENSEARCH is on WHATSAPP [be on OUR MAILING LIST!]

We update our members and friends via Whatsapp!

Please add our number to your phonebook & send us a message with your name and company and you will be updated regularly!

**ENSEARCH Mobile Number: +6016 278 0191**

Not our Member? Don't worry. You could still be on our mailing list. Please fill in this e-form:

<https://goo.gl/bvtTF7>



# TRAINING & ACTIVITIES CALENDAR FOR Q3 2021

## AUGUST

- 1) 19<sup>th</sup> August 2021: Webinar on Soil & Groundwater Issues  
Speaker: Mr Ng Hon Seng (Google Meet)
- 2) 25<sup>th</sup> & 26<sup>th</sup> August 2021: Applying ISO 45001 for Risk Management  
in Avoiding Major Accidents Caused by Industrial Hazardous

## SEPTEMBER

- 1) 14<sup>th</sup> September: Environmental Psychology – Mental Health &  
Stress Management  
Trainer: Mr Soundrajah Krishnan (Google Meet)
- 2) 29<sup>th</sup> & 30<sup>th</sup> September: Introduction on Sustainable/Solar Energy  
in Malaysia  
Trainer: Mr Murali Haripalan (Google Meet)

## OCTOBER

- 1) 7<sup>th</sup> & 8<sup>th</sup> October: Environment Aspect & Impact Awareness (EASI)  
Speaker: Dr Subramaniam Karuppannan (Classroom) (TBC)
- 2) 12<sup>th</sup>, 13<sup>th</sup> & 14<sup>th</sup> October: Enhancing Schedule Waste Spill Response  
Management (ESWSRM)  
Speaker: Dr Subramaniam Karuppannan

# TRAINING & ACTIVITIES CALENDAR FOR Q3 2021

- 3) 25<sup>th</sup> October: Fundamental of Quantitative Risk Assessment & Its Application from an EIA Perspective  
Speaker: Ts Adnan Yusop (Google Meet) (TBC)

## NOVEMBER

- 1) GIS for Environmental Management - An Introductory-  
CLASSROOM (TBC)

Trainer : Prof Tuong Thuy Vu

- 2) Fundamental of Qual2E & Water Monitoring

Trainer: Dr Ir Zaki Zainuddin (Classroom) (TBC)

## DECEMBER

- 1) Legal Compliance on Air Quality Management

Trainer: Prof. Dr Juliana (Classroom) (TBC)

- 2) Training on Scheduled Waste Management

(7th and 8th December 2021) - (TBC)

Trainer: Mr Shanmuga Kittapa

- 3) Training on Solid Waste Management

(28th and 29th December 2021) - (TBC)

Trainer: Prof Dr Razman

# ENSEARCH SEMINAR/TRAINING ROOM FOR RENT

**RM350.00 net per day**

Approximately 800 square feet

Classroom seating - 25 pax

Theatre seating - 40 pax

Time: 0830 - 1700

**INCLUDING**

Projector Screen

Whiteboard & Marker

Flip Chart

Water dispenser

High Speed WIFI Internet

Tables & Chairs

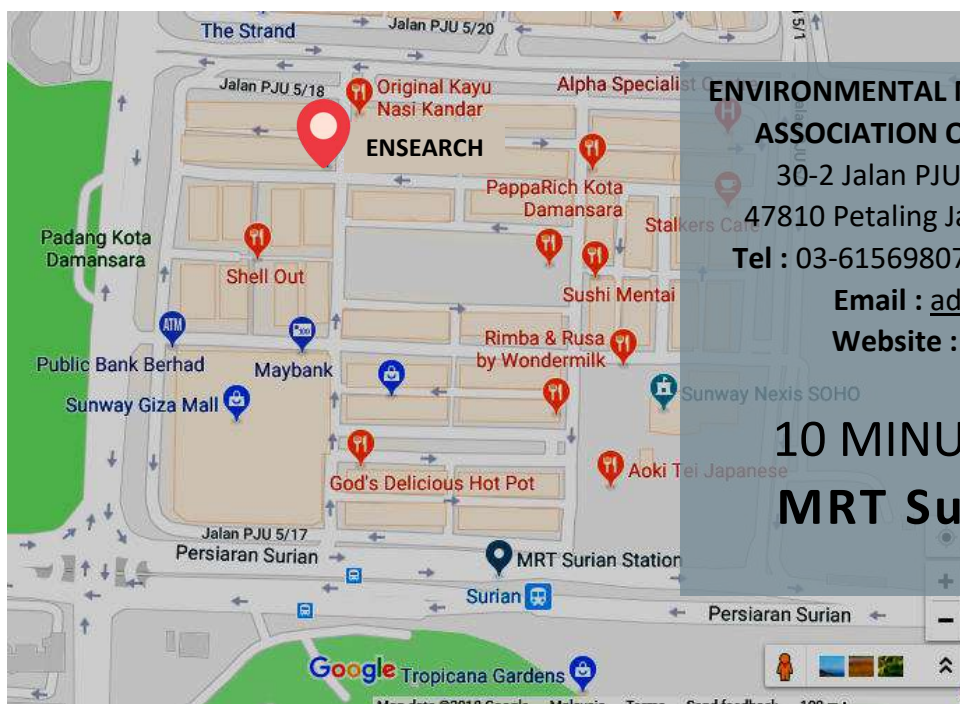
Prayer Room



**Spacious classroom or theatre setting**



**Reading corner at the room's entrance**



**ENVIRONMENTAL MANAGEMENT & RESEARCH  
ASSOCIATION OF MALAYSIA (70/84 WP)**  
30-2 Jalan PJU 5/16, Kota Damansara,  
47810 Petaling Jaya, Selangor Darul Ehsan.  
Tel : 03-61569807 / 08 Fax : 03 - 61569803  
Email : [admin@ensearch.org](mailto:admin@ensearch.org)  
Website : [www.ensearch.org](http://www.ensearch.org)

**10 MINUTES walk from  
MRT Surian Station**

**Interested?**

Please drop us an email at [admin@ensearch.org](mailto:admin@ensearch.org) or call us at 03-61569807.

# ENSEARCH COUNCIL 2021-2022

<b>PRESIDENT</b>	: Encik Abdul Aziz Bin Long
<b>VICE PRESIDENT</b>	: Encik Tan Poh Aun
<b>VICE PRESIDENT</b>	: Dr Subramanian Karuppanan
<b>HON. SEC. GENERAL</b>	: Encik Zaipul Anwar Zainu
<b>HON. TREASURER</b>	: Encik Kelvin Diong Siong Loong

## COUNCIL MEMBERS

Datuk Ir Othman Bin Abdul Rahim

Encik Satwan Singh

Encik Mohamed Siraj Abdul Razack

Puan Badariah Awang Kechik

Dr Hari Ramalu Ragavan

Encik Peter Toh Zhao Sing

Cik Natasha Nordin Manan

## CO-OPTED MEMBERS

Encik Gobinathan Kumaran Nair (Immediate Past President)

Puan Ruhaidah Md Hassan (Indah Water Konsortium Sdn. Bhd. Rep)

Encik Ir Fazli Rahim (PETRONAS Rep)

Cik Ismawati Mohd Shah (Cenciro Sdn Bhd Rep)

# ENSEARCH SECRETARIAT



## EXECUTIVE SECRETARY & ACCOUNT :

Cik Vishal Singam

## PROJECTS OFFICER:

Encik Syamim Asri

## ENVIRONMENTAL MANAGEMENT & RESEARCH

### ASSOCIATION OF MALAYSIA (ENSEARCH)

30-2, Jalan PJU 5/16, Dataran Sunway,

Kota Damansara, 47810 Petaling Jaya,

Selangor Darul Ehsan.

 03-61569807  03-61569803

 admin@ensearch.org

 www.ensearch.org

 ENSEARCH Resident

## Brief History of ENSEARCH

ENSEARCH was established on 26th November 1984 by a pioneer group of local professionals and academics from multidisciplinary backgrounds. The founder President (1984-2000) was Ir. K. Kumarasivam and the first Hon. Secretary General was Dato' Prof Dr. Abu Bakar Jaafar. As of today, ENSEARCH has more than 300 Members consisting of Corporate, Individual and Life Members.

It is acknowledged that enhanced awareness and competency of organizations and individuals through education and training is essential to achieve the objectives of the Malaysian Environmental Quality Act 1974. Therefore ENSEARCH began formulating and implementing training programmes to enhance the capacity for environmental management in Malaysia.

In addition, ENSEARCH organizes Tea Talks and Public Lectures to enhance awareness on pertinent and comprehensive issues on the environment. ENSEARCH has also been actively involved in dialogue sessions with relevant authorities in development of legislative and regulatory frameworks that strengthen the environmental management practices in Malaysia. In recognition of ENSEARCH's objectives, it has been given tax-exempt status whereby the donations to ENSEARCH are exempted from tax.