

perkasa

sarawak timber industry development corporation

october-december 2013

quarterly newsletter



Chief Minister of Sarawak,
the Right Honourable Pehin Sri
Haji Abdul Taib Mahmud played an
important role in manoeuvring the
overall development of wood-based
industry in Sarawak as well as the
establishment of STIDC

contents

03 Editorial

News

- 04 Tribute To CM
06 Agent for Change
08 STIDC Turned 40
10 STIDC Committed To Integrity & Innovation
12 Integrity And Innovation Day
14 MICCOS 2013

Highlight

- 16 Photography Competition
18 Study Tour
20 Strengthening The Timber Sector
21 Prepare For GST Now

2013

Market Performance

- 22 January to September 2013

Trade Statistics, Sarawak

- 25 January to September 2013 |
January to September 2012

EDITORIAL TEAM

ADVISOR

Datu Haji Sarudu Haji Hoklai
General Manager

CHIEF EDITOR

Tuan Haji Hashim Haji Bojet
Deputy General Manager

EDITOR

Sharifah Norolah Binti Wan Ahmad
Corporate Affairs Manager

WRITER

Norman Botes Noma

MARKET PERFORMANCE / TRADE STATISTICS

Erni Fariza Rambli



SARAWAK TIMBER INDUSTRY DEVELOPMENT CORPORATION (STIDC)

Wisma Sumber Alam, Jalan Stadium, Petra Jaya,
93050 Kuching,
P.O.Box 194, 93702 Kuching, Sarawak, Malaysia.
Tel: 6082-473000 Fax: 6082-442691
E-mail: stidc@pusaka.gov.my

PERKASA quarterly newsletter is published by Sarawak Timber Industry Development Corporation (STIDC). All rights reserved. No part of this publication may be reproduced in any form without prior consent of the Publisher.

The title "PERKASA", its logo and contents remain the property of the Publisher. Opinions expressed by advertiser are not necessarily of the Publisher or Editor



editorial



Year end is fast approaching. We would like to take this golden opportunity to thank those who had supported us in one way or another in playing our role effectively as the leader and catalyst of the wood-based industry in Sarawak.

First and foremost, we wish to record our sincere appreciation to all the wood-based industry players across the state for supporting the government's policies and continue to contribute to the state's economy in terms of revenue as well as employment and business opportunities. Your undivided support had enabled us to carry out our planned activities smoothly.

We would also like to express our heartfelt gratitude to the related government agencies for helping us with our main task to regulate the state's wood-based industry. Through such co-operation we had been able to undertake our duties and responsibilities properly in ensuring that the timber business is carried out orderly.

Last but not least, thank you to all the staff of STIDC and its subsidiaries for their commitment and dedication in supporting the government's aspiration to bring the wood-based industry to greater height. This is to ensure that the timber sector continue to be the mainstay of the state's economy for the benefit of the people.

With this opportunity, we wish our Christian readers Merry Christmas and to everyone a Happy and prosperous New Year.



Datu Haji Sarudu (centre) accompanying the Chief Minister of Sarawak, the Right Honourable Pehin Sri Haji Abdul Taib Mahmud (right) and the The Honourable Datuk Amar Haji Awang Tengah Ali Hassan (left) to the exhibition booth

TRIBUTE TO

CM

“ I like STIDC because they know what they are doing despite their heavy responsibilities. This is because the management so far runs very smoothly and they know their roles and work closely with the private sector ”

the Right Honourable Pehin Sri Haji Abdul Taib Mahmud



Chief Minister (CM) of Sarawak, the Right Honourable Pehin Sri Haji Abdul Taib Mahmud played an important role in manoeuvring the overall development of wood-based industry in Sarawak as well as the establishment of STIDC.

"As a front-liner, I had to look at all possibilities to develop various areas of the wood-based industry for more consolidated development. STIDC was quite successful in handling timber exports in Tanjung Manis. They were asked to develop Tanjung Manis into a modern centre for economic activities. Now Tanjung Manis New Township (TMNT) is connected to Sibu by road. Its economic activities had also been diversified into other fields such as ship-building and Halal Hub to produce sea food using bio-tech methods" he said.

To complement these developments, he said plans were formulated to develop Sarikei and Bintangor areas to become food producing centre taking advantage of its high population and local talents in farming. However, due to inadequate land to serve overseas market steps were taken to develop the native estate scheme through smart partnership with Chinese entrepreneurs to ensure the success of this concept.

"We are exploring into this partnership now as it paves the way forward for Sarawak and they are working quite well because the government supervises this scheme to ensure fair deal for the investors and we believe in few years time they can start producing vegetables and food for export markets. I know demand is increasing very

fast especially from China. This project is good because the Halal Hub area is using bio-tech and environmental friendly methodology to meet global standards" the Chief Minister said.

He highlighted that STIDC might be required to diversify into other activities besides wood-based industry as it has been playing its role successfully including the development of TMNT.

"Probably STIDC will also have to manage the shipbuilding industry near Paloh. There are many things that have changed and STIDC is also trying to run a port. They have changed the role of the Rajang Port. I have asked the port to specialise in handling water transportation throughout Sarawak

one million hectares with emphasis on fast growing tree species such as Acacia by 2020. This is to ensure a sustainable supply of raw materials for downstream processing industries because planted forests can produce five times more than natural forests. Besides providing an alternate source of raw materials this initiative also helps to mitigate pressure on natural forests. Presently, over 200,000 hectares of planted forests had already been established. This initiative is also in support of the government's plan to establish Pulp and Paper industry in the near future.

"There is room for us to develop Pulp and Paper industry because every 100,000 acre of planted forests can support one Pulp and Paper industry. Gradually, we are

modernising our wood-based industry into a professional intensive sector capable of producing mass value-added products. My only concern is whether we can produce huge number of technical workers because in the next 20 years, we need more than 300,000 technical workers. Nowadays, the more educated people

are the less likely they are going to the lower technical fields although the pay is better. However, if we can produce that number, I can tell you we can have better distribution of income. In the end, people will be happy and become more disciplined because technical people tend to be more disciplined. I think in the next 20 years, I am trying to plan for the next phase of Sarawak Corridor of Renewable Energy (SCORE) to see whether the tourists can go into the interior taking advantage of the beautiful landscape such as lakes in Bakun and Murum which can be transformed into tourist attractions." he said.



STIDC General Manager, Datu Haji Sarudu (3rd left) presenting a gift in appreciation of the contribution of The Chief Minister of Sarawak, the Right Honourable Pehin Sri Haji Abdul Taib Mahmud (3rd right) to STIDC and the wood-based industry as a whole

including Sungai Sadong, Saribas, Saratok, Mukah, Bintangor, Tatau, etc. I think we can use more barges for palm oil as the main mode of transportation instead of roads which is more expensive. So Rajang Port had changed and so does STIDC. They have to run palm oil terminal due to Tanjung Manis strategic location between Ulu Kapit and Kenawit. In future, probably Rajang Port Authority doesn't have to look after wharf anymore because it is more economical to use barges instead of roads" he said.

On planted forest establishments, the Chief Minister said Sarawak aims to plant



Launching of STIDC 40th Anniversary by the Chief Minister of Sarawak, the Right Honourable Pehin Sri Haji Abdul Taib Mahmud (centre) while the other VIPs look on

SUMMARY

- STIDC might be required to diversify into other activities besides wood-based industry
- Planted forest establishments initiative is also in support of the government's plan to establish Pulp and Paper industry in the near future
- Gradually, Sarawak is modernising its wood-based industry into a professional intensive sector capable of producing mass value-added products

AGENT FOR CHANGE

STIDC Chairman, The Honourable Datuk Amar Haji Awang Tengah Ali Hassan said the last 40 years had seen tremendous evolution in STIDC's role from being a service oriented agency to become an agent for change and leader in many timber related industries as well as fostering developments in key areas for the state particularly in Tanjung Manis.

He attributed these achievements to the farsightedness of Chief Minister of Sarawak, The Right Honourable Pehin Sri Haji Abdul Taib Mahmud in establishing STIDC in 1973 as a key player in the state's economic developments in timber, ship-building, aquaculture, fisheries as well as Tanjung Manis Halal Hub which was also identified as an industrial hub under the Sarawak Corridor of Renewable Energy (SCORE). The continuous transformation of STIDC from solely timber related activities to all these new fields is in line with the state's economic transformation plans clearly demonstrates the Chief Minister's vision for STIDC.

Apart from the new range of activities, he said STIDC continues to be the main authority in the timber industry for forest resources, plantation, entrepreneur development and trainings. All these activities were planned to ensure sustainable utilisation of the state's forests and bring about greater prosperity to the people involved in the timber industries including furniture making, ship-building and forest plantation.

At the same time, he said STIDC is concerting the efforts for the development

The last 40 years had seen tremendous evolution in STIDC's role from being a service oriented agency to become an agent for change



The Chief Minister of Sarawak, the Right Honourable Pehin Sri Haji Abdul Taib Mahmud (centre) together with the other VIPs cutting the STIDC 40th Anniversary Cake

of Bumiputera entrepreneurs through the vendor programme in collaboration with other state agencies by providing them with the necessary skills, financial resources and also markets for their products. This is in addition to capacity building for workforce for the wood-based industries in Sarawak.

On Tanjung Manis Development Plan, he said initially it was for a timber processing zone and gradually grew to become one of the new industrial hubs for the state's SCORE project, which intends to make Sarawak a high-income economy by 2030. The strategic location coupled with the deep natural harbor was ideally suited for the timber related industries which quickly developed into a ship-building centre to take advantage of the location and also other incentives in the early years of development.

Being one of the new growth nodes in SCORE, he said Tanjung Manis is poised to become a major centre of the central region of Sarawak adding that other industries have also been planned here including the Palm Oil Industrial Cluster (POIC) comprising the Central Oil Distribution Terminal (CODT), Integrated Palm Oil Project (IPOP), Light

Industrial Park for petrochemicals, Oleo-chemicals and related industries of oil, gas and chemicals represent the major components, taking advantage of the growing importance of palm oil in the region.

According to him, another key component in the development of Tanjung Manis is the Halal Hub which will possibly be the world's largest when fully developed with its 77,000 acres allocated area. With the simultaneous development of aquaculture, agriculture and food processing industries in the surrounding area, the signs of success for the Halal Hub are for everyone to see, particularly investors who begin to realise the true potential of the hub. With the rapid development of the Middle East markets the demand for halal products will continue to surge and as the dedicated Halal Hub with excellent trading facilities, Tanjung Manis will become a strong magnet for such investments.

Aside from the industrial and commercial developments, he said there are also residential developments to cater for the growing population in Tanjung Manis. Incorporated into these residential developments include public amenities like tar-sealed roads, telecommunications, water, electricity, school, religious centre, recreational sport facilities while the public support facilities include police, immigration, customs, forest department, port authority and other government agencies.

"What investors can see is that STIDC is not only the planner but also the builder, engineer and service provider at Tanjung Manis. We aim to be a complete one-stop centre for all types of development in the area to facilitate the smooth implementation of projects here. After all, STIDC has been the main player in Tanjung Manis from day one. Based on STIDC's projection, most of the projects will be accomplished on time

and poised for business and operations as scheduled" Datuk Amar Haji Awang Tengah said.

In view of the experience gained from the timber trade and industries as well as development of Tanjung Manis, he said, STIDC has emerged as an organisation that can provide consultation services to other organisations. Having an experienced partner in large-scale projects is always an advantage that will lead to time and cost saving as well as ability to overcome problems and issues along the way. STIDC has certainly come a long way from the early days of just another agency to oversee timber development in the state, it has become one of the most innovative, productive and forward-looking organisations in Sarawak.

He added that recently STIDC had inked the Reorganisation and Rationalisation (R&R) Agreement with PUSAKA Capital Sdn. Bhd., a special purpose vehicle incorporated by STIDC to spearhead the initiative to reorganise and rationalise the Group (Proposed R&R Exercise). This governance structure which led to the implementation of the proposed R&R Exercise was recently approved by STIDC Board of Management.

The Proposed R&R Exercise segregates STIDC's function to regulate the timber industry from its other roles. This exercise allows STIDC to focus on its objective to ensure continuous improvement to the timber industry in Sarawak.

On the other hand, the commercial functions would help generate more diversified sources of revenue to sustain its regulatory role besides minimising the need to depend on government funding and promoting financial self sustainability.



SUMMARY

- STIDC continues to be the main authority in the timber industry for forest resources, plantation, entrepreneur development and trainings
- STIDC is not only the planner but also the builder, engineer and service provider
- STIDC has emerged as an organisation that can provide consultation services to other organisations



Numerous events were lined up in commemoration of this auspicious occasion



Celebration in progress

STIDC is 40 years old this year. Numerous events were lined up in commemoration of this auspicious occasion which culminated in a grand appreciation dinner on 11th December 2013 in Kuching, Sarawak.

In his address, STIDC General Manager, Datu Haji Sarudu Haji Hoklai said STIDC owes its past and present glory to its founder, The Right Honourable Pehin Sri Haji Abdul Taib Mahmud, Chief Minister of Sarawak who initiated the inception of the Corporation 40 years ago. Since then, the Chief Minister helmed STIDC until 2008 when The Honourable Datuk Amar Haji Awang Tengah Ali Hassan succeeded him as the new Chairman.

According to him, STIDC started as a small organisation with just a few staff and limited resources. Its core function was confined to timber regulatory activities in Tanjung Manis. However, due to the far-sightedness of The Right Honourable Pehin Sri, STIDC had grown from strength to strength. Its core function had also been diversified into other fields including the development of Tanjung Manis New Township. Under Pehin Sri, Tanjung Manis New Township had undergone tremendous transformation. Today, the township is linked by air, road and water. Its economic activities had also expanded into other fraternities such as agriculture, aquaculture, deep-sea fishing, food processing, ship-building, Palm Oil Industrial Cluster (POIC), integrated port and many more. Tanjung Manis had also been earmarked for the establishment of the world's largest Halal Hub covering an



STIDC TURNED



Celebration in progress



One of the stage presentations



The Chief Minister of Sarawak, the Right Honourable Pehin Sri Haji Abdul Taib Mahmud (2nd right) together with the other VIPs launching the "40 Years And Moving On - Transformation Of Sarawak Timber Industry Development Corporation" book.

area of 77,000 acres. Furthermore, the township is equipped with administrative, religious, commercial, educational as well as residential and recreational centres. With these developments, Tanjung Manis had been able to entice investors not only into the township but also its surrounding areas. All these developments had benefitted the local populace in terms of business and employment opportunities which led to continuous improvement in their living standards. Obviously, The Right Honourable Pehin Sri had brought STIDC and the wood-based industry in Sarawak from a humble beginning into what it is today.

Therefore, the appreciation dinner was timely as a manifestation of STIDC's gratitude to our beloved Chief Minister for his invaluable contribution to the development of STIDC, wood-based industry and the people of Sarawak as a whole.

Datu Haji Sarudu added that the function also reflected STIDC's appreciation to its present Chairman, the Honourable Datuk Amar Haji Awang Tengah Ali Hassan for his continuous support and guidance in assisting STIDC and the wood-based industry in Sarawak to scale new height for mutual benefit.

"Thank you also to our wood-based industry players for your continuous contribution to the State's economy.

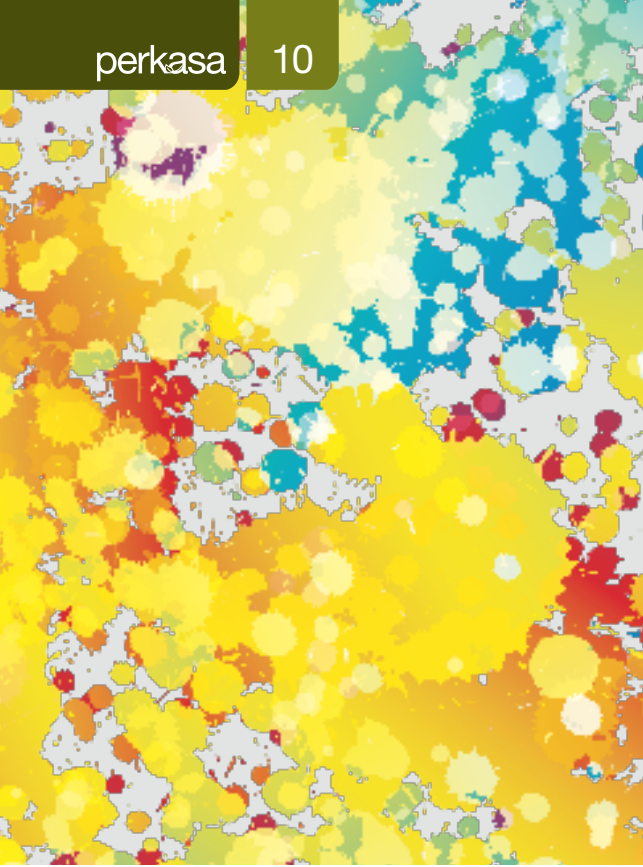
Timber sector being the mainstay of the State's economy contributed RM5.4 billion from January-September 2013 compared with

RM5.5 billion during the corresponding period last year. This sector had also provided an estimated number of 44,167 employment opportunities to both local and foreign workers in 2013 compared with 42,980 in 2012. I would also like to thank all the related government agencies for continuously supporting the government policies. Without your undivided support it would be difficult for us to realise the policies and achieve our objectives" he said.

Datu Haji Sarudu also pledged his fullest support to the present Chairman in ensuring that STIDC implement the government policies and strive for continuous improvement in the wood-based sector in Sarawak. He hoped that the industry players and the related agencies would continue to give their undivided support in helping STIDC to play its pivotal role as the leader and catalyst of the wood-based sector in Sarawak.

SUMMARY

- STIDC owes its past and present glory to its founder, The Right Honourable Pehin Sri Haji Abdul Taib Mahmud who initiated the inception of the Corporation 40 years ago
- The Right Honourable Pehin Sri had brought STIDC and the wood-based industry in Sarawak from a humble beginning into what it is today
- It is hoped that the industry players and the related agencies would continue to give their undivided support in helping STIDC to play its pivotal role as the leader and catalyst of the wood-based sector in Sarawak



The Honourable Datu Haji Len Talif Salleh (centre) together with other VIPs posing with winners of the Integrity and Innovation Oratory Competition

The celebration was in appreciation and recognition of the civil servants' efforts in acculturating integrity and innovation by equipping themselves with knowledge, skills and good moral values

STIDC held the Integrity and Innovation Day without fail since 2010 in support of the government's aspiration to achieve a world-class civil service. Its Chairman cum Minister of Resource Planning & Environment II as well as Minister of Public Utilities and Minister of Industrial Development, The Honourable Datuk Amar Haji Awang Tengah Ali Hasan said such initiative reflects the Corporation's continuous effort in acculturating integrity and innovation values among the staff. His speech was presented by The Honourable Datu Haji Len Talif Salleh, Assistant Minister in the Chief Minister's Department (Promotion of Technical Education and Environment.)

STIDC
COMMITTED
TO **INTEGRITY &
INNOVATION**



The Honourable Datu Haji Len Talif Salleh (centre) together with other VIPs launching the Timber Portal

Describing integrity and innovation as the integral elements in ensuring that services are rendered at its best, the minister said these elements are in line with the government's "1Malaysia, People First, Performance Now" concept.

Based on this concept, he emphasised that integrity and innovation should always be practised to enhance efficiency in delivery system as well as to boost productivity and to gain greater customers' confidence.

In order to put integrity and innovation into practice, the minister stressed that civil servants should embrace universal values such as trustworthiness, fairness, respectfulness, understanding and wisdom in executing their duties and responsibilities.

According to him, civil servants across the board play a pivotal role in ensuring good governance and innovation towards achieving excellent delivery system and the national vision to become a high income nation by 2020.

"I am optimistic that under the present leadership and with the staff commitment towards integrity and innovation STIDC is on the right track to further improve its delivery system for customers' benefit in tandem with the objective to spearhead

the advancement of an innovative timber industry" the minister said.



The Honourable Datu Haji Len Talif Salleh (8th right) and other VIPs posing with STIDC's Innovative and Creative Teams

SUMMARY

- STIDC held the Integrity and Innovation Day without fail since 2010 in support of the government's aspiration to achieve a world-class civil service
- Integrity and innovation are in line with the government's "1Malaysia, People First, Performance Now" concept
- Integrity and innovation should always be practised to enhance efficiency in delivery system as well as to boost productivity and to gain greater customers' confidence



INTEGRITY AND INNOVATION DAY

Integrity and Innovation Drives
Excellent Culture

STIDC entered its fourth year in celebrating the Integrity and Innovation Day this year. Held on 11th November 2013 at Wisma Sumber Alam, Kuching, this annual event aimed to instill integrity and innovation values among the staff and to acculturate these values in delivery system which is in tandem with the work culture of Sarawak Civil Service.



The Honourable Datu Haji Len Talif Salleh (centre) together with other VIPs visiting one of the exhibition booths. The exhibition was held in conjunction with the Integrity and Innovation Day 2013 at Wisma Sumber Alam Multi-Purpose Hall

Highlighting this year's theme, "Integrity and Innovation Drives Excellent Culture", STIDC General Manager, Datu Haji Sarudu Haji Hoklai said it is relevant with the government's stride towards achieving a world-class civil service. His speech was delivered by STIDC Acting General Manager, Tuan Haji Hashim Haji Bojet.

Parallel with this aspiration, he said STIDC is committed to striving for continuous improvement in its work processes and service delivery system.

In appreciation of the staff commitment as well as excellent work performance and integrity attitude, he added that STIDC had initiated the Integrity Exemplary Award. As such, he urged the staff to continue to practise good governance with innovation and always strive for the best.

In acculturating innovation in STIDC, Datu Haji Sarudu emphasised that steps were taken to ensure continuous improvement in work processes including through MS ISO 9001:2008 as well as Innovative and Creative Teams (ICT) and Key Focus Activity. This year, two ICTs from STIDC were given recognition at both state and national level ICT conventions. In addition, STIDC was also shortlisted for Sarawak Chief Minister's Award.

In conjunction with its 40th anniversary this year, STIDC had also successfully organised the Integrity and Innovation Oratory Competition with the aim to help

the staff to appreciate and adopt integrity and innovation values in their daily duties and responsibilities. STIDC also made a remarkable achievement under the ICT initiative by creating its own Timber Portal which is an online web-based search tool. The Timber Portal was officially launched in conjunction with this year's Integrity and Innovation Day by the Assistant Minister in the Chief Minister's Department (Promotion of Technical Education and Environment), the Honourable Datu Haji Len Talif Salleh. Phase 1 of the Timber Portal provides information on 60 species of commercial local timber. More species will be updated in the Portal in future.

SUMMARY

- The Integrity and Innovation Day aimed to instill integrity and innovation values among the staff
- This year's theme, "Integrity and Innovation Drives Excellent Culture" is relevant with the government's stride towards achieving a world-class civil service
- STIDC is committed to striving for continuous improvement in its work processes and service delivery system



MICCOS 2013

Sustainable Commodity for a Better Tomorrow

STIDC together with over 500 exhibitors had participated in the Fifth Malaysia International Commodity Conference and Showcase (MICCOS) 2013. Organised and hosted by the Ministry of Plantation Industries and Commodities (MPIC), this biennial event was held at Malaysia Agro Exposition Park, Serdang, Selangor, Malaysia.



A section of STIDC information booth

MICCOS is a premier event for Malaysian commodity industries including palm oil, rubber, timber, cocoa, pepper, kenaf, tobacco and sago. It brings together the major commodity players comprising smallholders, manufacturers, entrepreneurs, exporters as well as agencies and organisations related to the development of commodity sector in Malaysia.

MICCOS among others aims to promote the advancement and latest development of the country's commodity industries including technology and commodity-based new products. It provides a platform for industry players from both public and private sectors to share ideas and experiences as well as to explore new business opportunities in commodity industries nationally and internationally.

With a theme "Sustainable Commodity for A Better Tomorrow", MICCOS 2013 featured the transformation of commodity sector based on 3P aspects namely People, Planet and Profits in consonance with

the government's aspiration to achieve a high income nation status by 2020. 2013 International Conference on Oil Palm and Environment for instance had given a clearer picture on the development of commodity industries including conservation initiatives in Malaysia. More importantly, it helped to enhance understanding and rectified the negative perception of certain quarters on the country's commodity industries.

Commodity Industry Awards were presented in conjunction with MICCOS 2013 for eight categories including the Best Plantation Management, Best Small-scale Farmer, Best Processing Factory, Best SME, Best Brand, Best Innovation in Commodity Production, Best Science Innovation and Best CSR. The awards reflected the government's recognition on excellent industry players in their respective category.

STIDC's participation in this event was timely in view of its direct involvement in planted forest projects, SME and CSR programmes. The planted forest projects

are in support of the State Government's aspiration to establish at least one million hectares of forests by 2020 to ensure a sustainable supply of raw materials for downstream processing industries besides mitigating the pressure on natural forests. Under the SME programme, STIDC aims to develop a community of competitive Bumiputera entrepreneurs with emphasis on furniture business. To help these entrepreneurs scale new height, STIDC is providing the assistance including the furniture industrial complexes for them to run their businesses, technical advisory services as well as trainings. STIDC also subscribes to the principle of giving back to the community under its CSR programme. This was evident by its continuous contributions in cash and kind to NGOs since over 30 years ago.

Besides highlighting its vision in spearheading the advancement of timber industry, STIDC's booth also featured the timber samples and provided information on the background of timber industry in Sarawak.



Visitors taking a close look at the timber samples displayed at STIDC information booth

SUMMARY

- MICCOS provides a platform for industry players from both public and private sectors to share ideas and experiences as well as to explore new business opportunities in commodity industries nationally and internationally
- MICCOS 2013 featured the transformation of commodity sector based on 3P aspects in consonance with the government's aspiration to achieve a high income nation status by 2020
- STIDC's participation in this event was timely in view of its direct involvement in planted forest projects, SME and CSR programmes



NO.1 FLOR & FAUNA
The finest under Flora and Fauna Category



PHOTOGRAPHY COMPETITION



Scenery/Forest Landscape, Timber and Its Uses and Flora & Fauna categories

This year marks STIDC's 40th year in playing its role as the leader and catalyst of the wood-based industry in Sarawak. Various activities had been lined-up in commemoration of this auspicious year. Among the activities which had been successfully carried out was the Photography Competition.

The competition which attracted over 400 entries was divided into three categories namely Scenery/Forest Landscape, Timber and Its Uses, and Flora and Fauna.

Panel of judges comprising Associate Profesor Zulkarnain Zainal Abidin, Dr. Kamel Salim and Mr. Zulazhar Sheblee unanimously selected the following contestants as winners of the competition:

	CATEGORIES
WINNERS	SCENERY / FOREST LANDSCAPE
First	Mr. Chew Chung Hian
Second	Mr. Muhamad Razali Nordin
Third	Mr. George Chiew Sing Kor
Consolation	1. Mr. Wong Muh Lung 2. Mr. Ting Pang Sing 3. Mr. John Lai Teck Kee 4. Mr. Geoffrey bin Ramji 5. Dr. Kong Ung Leong

WINNERS	TIMBER AND ITS USES
First	Mr. Mak Sen Fatt
Second	Mr. Mohamad Gustie Noorambia
Third	Mr. Chew Chun Hian
Consolation	1. Mr. Mohd Irhasman bin Inggal 2. Mr. Jongkar Grinang 3. Mr. Wong Muh Lung 4. Ms. Hii Kin Fong 5. Mr. Michael Lai Min Chiang

WINNERS	FLORA AND FAUNA
First	Mr. Wong Muh Lung
Second	Mr. Mohamad Kartizan Mohamad Ibrahim
Third	Ms. Lam Hui Chen
Consolation	1. Mr. Hashim Mahrin 2. Mr. Pui Yong Min 3. Mr. Ik Wadell ak Ik Pahon 4. Mr. Liew Yong Fei 5. Mr. Hii Dao Wei

Through this competition STIDC hopes to create awareness among the public particularly the participants on the usefulness of forests in our daily lives. The competition was also in support of the government's efforts to encourage the people to love and conserve the forests for the benefit of the present and future generations.



NO.1 LANDSCAPE HUTAN
The best result under Scenery/Forest Landscape Category



NO.1 KAYU
The most artistic under Timber and Its Uses Category



STIDC General Manager, Datu Haji Sarudu Haji Hoklai (2nd row – 6th left) and his Deputy, Tuan Haji Hashim Bojet (2nd row – 5th right) posing with winners of the Photography Competition

SUMMARY

- The competition attracted over 400 entries
- The competition among others aimed to create awareness among the public particularly the participants on the usefulness of forests in our daily lives

STUDY TOUR

In quest for continuous improvement



STIDC officials being briefed by Majlis Perbandaran Alor Gajah (Alor Gajah Municipal Council's) Senior Officer

Concerted efforts were made by STIDC in its quest for continuous improvement in tandem with the people's rising expectation. The efforts included sharing and learning from other organisations with similar interest. This was evident by its recent study tour to various government offices and government-linked companies in Melaka and Johor.

In Melaka, STIDC had visited Jabatan Ketua Menteri (Chief Minister's Department) on Majlis Bersama Jabatan, Perbadanan Kemajuan Negeri Melaka (Melaka Economic Development Corporation) on SME projects, and Majlis Perbandaran Alor Gajah (Alor Gajah Municipal Council) on 5S practices.

On the other hand, the visit to Johor covered Galeri Glulam Malaysian Timber Industry Board on the use of glued laminated timber species, Tanjung Langsat Industrial Complex on Palm Oil Industrial Cluster project, Senai Airport Terminal Services Sendirian Berhad on airport operation, and Tanjung Pelepas Port Sendirian Berhad on port operation.

The visit to these organisations was relevant in view of STIDC's active involvement in Majlis Bersama Jabatan, SME projects and 5S practices. Being the leader and catalyst of the wood-based industry in Sarawak, STIDC is also keen to explore the uses of timber species to add value to forest resources. STIDC was also tasked

by Sarawak government to oversee the overall development of Tanjung Manis New Township which houses the Palm Oil Industrial Cluster projects, Tanjung Manis Airport, and Tanjung Manis Integrated Port. Tanjung Manis had been identified as one of the new growth nodes in Sarawak Corridor of Renewable Energy (SCORE).



SUMMARY

- STIDC is keen to explore the uses of timber species to add value to forest resources
- STIDC was tasked by Sarawak government to oversee the overall development of Tanjung Manis New Township
- Tanjung Manis had been identified as one of the new growth nodes in SCORE

Led by the General Manager, Datu Haji Sarudu Haji Hoklai, the five-day (15th-19th December 2013) visit was also participated by the management members, senior officers as well as representatives of STIDC Majlis Bersama Jabatan.

Datu Haji Sarudu Haji Hoklai (front row - 3rd right) and his Deputy, Tuan Haji Hashim Haji Bojet (front row - 2nd left) together with STIDC officials attending a briefing at Perbadanan Kemajuan Negeri Melaka (Melaka Economic Development Corporation)

Visit to Jabatan Ketua Menteri (Chief Minister's Department), Melaka



STRENGTHENING THE TIMBER SECTOR

Plans are in the pipeline to regain lost markets besides the efforts to penetrate new emerging markets

Sarawak earned an export value of RM5.4 billion from timber and timber products for the period of January-September 2013. The three main export items were logs (RM800 million), plywood/veneer (RM2.2 billion) and sawn-timber (RM328 million). These items contributed almost 93% or RM4.99 billion of the overall export revenue of Sarawak's timber and timber products.

The five major consuming countries during the period were Japan (RM2.1 billion), India (RM825 million), Taiwan (RM619 million), the Middle East (RM422 million) and Korea (380 million) with almost 81% or RM4.4 billion of the total export income of timber and timber products from the State.

Sarawak hopes to sustain the export value of timber and timber products at RM7.2 billion level this year due to favourable economic situation in the major consuming countries. It is also hoped that Japan would increase its demand for timber and timber products following the election of Tokyo as the host for Olympic Games 2020. As such, Japan is poised to intensify infrastructure development in order to upgrade the Olympic Games facilities.

Export performance for the third quarter of this year dipped slightly by 2.8% or Rm155,000 compared with the



corresponding period last year. Besides plywood, mouldings and particleboard other timber products had also dropped in terms of export value.

Similarly, demands from various markets had also declined with India (11%), the Middle East (20%), Korea (19%), China (17%) and Thailand (14%).

Concerted efforts will continue to sustain Sarawak as the major exporter of tropical timber products in the region. These include timber selling missions and participation in both national and international exhibitions.

Recently, STIDC had successfully organised the maiden Grand Timber Expo in Kuching, Sarawak which among others aimed to strengthen Sarawak as the source of raw materials for tropical timber products.

STIDC is also embarking on research to formulate the master plan to strengthen the roles of SMEs in the wood-based downstream industry in Sarawak.

As a whole, the government has a series of plans and programmes to boost exports. Presently, the Malaysian Timber Council (MTC) and Malaysian Furniture Promotion Council (MFPC) are vigorously promoting Malaysian timber overseas. Plans are also in the pipeline to regain lost markets besides the efforts to penetrate new emerging markets.

SUMMARY

- Sarawak hopes to sustain the export value of timber and timber products at RM7.2 billion level this year due to favourable economic situation in the major consuming countries
- Concerted efforts will continue to sustain Sarawak as the major exporter of tropical timber products in the region
- Presently, MTC and MFPC are vigorously promoting Malaysian timber overseas



Now that the Goods and Services Tax (GST) has been announced in Budget 2014, local businesses should begin preparing for its implementation in 2015 as early as possible.

Crowe Horwath (Sarawak) Tax Sdn. Bhd. director, Hudson Chua said it would be beneficial for businesses to get ready for GST sooner rather than later.

"Malaysian businesses are now realising that GST will be a reality, so it's important for them to understand its mechanism and how to implement it in their systems," he told reporters during a budget and tax outlook seminar recently. Under Budget 2014, a GST of 6% would be implemented effective 1st April 2015.

According to Crowe Horwath tax executive director, Fennie Lim, GST is a broad-based consumption tax which applies to the supply of goods and services at every level of the supply chain.

"GST is not just a tax issue, it is a business issue as it affects every aspect of a business, from finance and administration to procurement, sales and marketing, information technology and human capital."

Lim, who was one of the speakers at the seminar, also said worldwide experience showed that businesses which commenced their GST implementation project early had a much smoother process and better track record for compliance after implementation.

"Hence, in developing an optimal implementation strategy to the companies, it is opportune to make preparations now in view of the time required to understand the implications of GST" she added.

Source: The Star, 7th November 2013

PREPARE
FOR
GST

NOW

JANUARY – SEPTEMBER

2013

market performance

The values of logs and timber products exported in the first three quarters of 2013 decreased by 7.8% to RM5.4 billion from RM5.5 billion. There were decreased in the overall values of timber and timber products exported.

Respective decreased in export values were that of log (8%), sawntimber (17%), veneer (13%), laminated board/flooring (29%), moulding (0.77%), dowel (40%), fibreboard (15%), blockboard (94%) and particle board (7%). However, there were respective increase in export value of plywood (4%) and woodchips (31%).

Total export values of of plywood, logs and sawntimber were RM3.1 billion @ 57%, RM1.3 billion @ 23% and RM486 million @ 9% respectively. This had contributed 89% to the total export value of logs and timber products from the State since January to September 2013. **(Table 1)**

LOGS

The volume of logs exported for the third quarter of 2013 decreased by 16% to 2.1 million m3 from 2.5 million m3 and the value decreased by 8% to RM1.3 billion from RM1.4 billion compared to similar period in 2012.

India remains the largest buyer of the State's logs which comprises 61% @ 1.3 million m3 of the total export however, decreased its purchase of logs by 22% from 1.6 million m3 to 1.3 million m3 followed by Taiwan increased by 14% to 295 thousand m3 from 258 thousand m3 and China decreased by 20% to 198 thousand m3 from 247 thousand m3 when compared to same period in 2012.

The top three importer were India, Taiwan and China constituted 85% of the total volume and contributed 88% of logs purchased from January to September 2013.

Average price of logs increased by 8% from RM539 per m3 to RM581 per m3 for the first three quarters 2013 compared to similar period in 2012. **(Table 2)**

PLYWOOD

Volume of plywood exported from January to September 2013 increased by 3.6% to 2.0 million m³ from 1.9 million m³ and the value also increased by 4.5% to RM3.1 billion from RM2.9 billion for the corresponding period in 2012. Plywood sales contributed 57% to the overall timber products revenue obtained from the export of logs and timber products for the first third quarters 2013.

Japan maintained its position as the number one purchaser of the State's plywood for the first third quarters of 2013 at 1.1 million m³ from 1.0 million m³ which increased by 10% compared to the same period last year. Followed by Middle East (to 221 thousand m³ from 271 thousand which

decreased by 18%) and Taiwan (to 203 thousand m³ from 172 thousand m³ which increased by 18%).

Export to Japan, Middle East and Taiwan constituted 77% of the total volume and contributed 76% of plywood from January to September 2013.

Average price of plywood increased by 0.8% from RM1,520 per m³ to RM1,533 per m³ for the first three quarters of 2013 compared to similar period in 2012. **(Table 4)**

SAWNTIMBER

Sawntimber exported for the third quarter of 2013 decreased by 11% to 545 thousand m³ from 612 thousand m³ compared to the same period last year. The value also decreased by 17% to RM486 million from RM586 million compared to that similar period of the previous year.

Philippines become the top importer for the State's sawntimber by purchasing volume of 142 thousand m³ from 117 thousand m³ of the sawntimber which increased by 21% followed by followed by Thailand (imported 140 thousand m³ decreased by 21% from 178 thousand m³) and Middle East (99 thousand m³

decreased by 30% from 141 thousand m³) when compared to the similar period in 2012.

The top three importer were Philippines, Thailand and Middle East constituted 70% of the total volume and contributed 63% of sawntimber from January to September 2013.

Average price of sawntimber decreased by 7% from RM958 per m³ to RM891 per m³ for the first three quarters 2013 compared to similar period in 2012. **(Table 3)**



OUTLOOK

In the first three quarters of this year, the exported value of logs and timber products was recorded at RM5.39 billion and expected to reach RM7 billion by the end of this year. The export value decreased by 2.8% from RM5.5 billion to RM5.4 billion during the same period due to the global economic recession and unpredictable economic phenomena in the world markets.

Minister of Resources Planning and Environment (II) Datuk Amar Haji Awang Tengah Ali Hassan said, a few steps had been taken to strengthen the demand of local timber products at the international markets and that include promotional programmes, participation in exhibitions and meeting with industry associations from the importing countries.

The government is also implementing the policy of "nothing should go to waste" which means every piece of wood including sawdust, can be processed into commercial products such as medium density fibreboard, particle board, wood pallet and many more. The industry has reached a stage whereby it is capable to optimize the utilization of raw material," he said. (Source: Borneo Post)

Besides that, research is being carried out for small and medium industries to expound its roles in the timber industry in Sarawak especially in the manufacturing of furniture for export to global market.

OTHER TIMBER PRODUCTS

Export value of veneer, laminated board/flooring, moulding, dowel, fibreboard, blockboard, particle board, woodchips and other timber products was RM569 million from January to September 2013 which contributed 11% of the overall value of logs and timber products. There was a decrease in exported values of these products by 12% in comparison with similar period in 2012.

There were respective decrease in export volume of block board (96%), dowel (27%), laminated board/flooring (25%), veneer (13%), fibreboard (5%) and moulding (3%) from January to September 2013 compared to the same period in 2012. In spite of the overall decrease in export volume there was a marked increase for woodchips (33%) and particle board (6%) for the first three quarters 2013 compared to last year. **(Table 5,6,7,8,9)**

trade statistics

sarawak

TABLE 1
EXPORT SUMMARY OF TIMBER AND TIMBER PRODUCTS FROM SARAWAK

PRODUCTS	2013 ^p January - September			2012 ^a January - September			% Change 2013 / 2012	
	Volume (M ³)	FOB Value (RM'000)	Value %	Volume (M ³)	FOB Value (RM'000)	Value %	Volume	Value
LOG	2,087,291	1,253,195	23.26	2,494,418	1,360,867	24.55	(16.32)	(7.91)
SAWNTIMBER	545,065	485,658	9.01	612,033	586,383	10.58	(10.94)	(17.18)
PLYWOOD	2,008,605	3,080,141	57.16	1,938,576	2,948,149	53.19	3.61	4.48
VENEER	140,541	169,258	3.14	161,884	194,653	3.51	(13.18)	(13.05)
LAMINATED BOARD / FLOORING	11,233	25,805	0.48	14,967	36,139	0.65	(24.95)	(28.60)
MOULDING	5,716	13,851	0.26	5,901	13,959	0.25	(3.13)	(0.77)
DOWEL	617	2,268	0.04	840	3,751	0.07	(26.57)	(39.54)
FIBREBOARD	137,260	194,771	3.61	143,651	229,665	4.14	(4.45)	(15.19)
BLOCKBOARD	45	51	0.00	1,056	896	0.02	(95.77)	(94.31)
PARTICLE BOARD	96,349	45,518	0.84	91,281	48,854	0.88	5.55	(6.83)
OTHER PRODUCTS*	69,610	75,953	1.41	67,610	88,508	1.60	2.96	(14.19)
OTHER PRODUCTS** [Tonne]	2,657	1,045	0.02	-	-	-	100.00	100.00
WOODCHIP [Tonne]	213,800	40,938	0.76	160,600	31,223	0.56	33.13	31.11
TOTAL (m3) (RM)	5,102,331	5,388,452	100	5,532,217	5,543,047	100	(7.77)	(2.79)

***OTHER TIMBER PRODUCTS:**

- Biomass Particles
- Chopping board
- Densified wood
- Door & door frames
- Finger jointed
- Furniture and furniture parts
- Laminated beam
- Laminated post
- Laminated Veneer Lumber (LVL)
- Parquet flooring
- Railways sleepers
- Wooden fences
- Wooden gates
- Wooden pallet
- Wooden pegs & stakes
- Wooden pellet

****OTHER TIMBER PRODUCTS:**

- Wooden pellet

Notes:

- Fibreboard include MDF and HDF
- Total of volume (m3) does not includes woodchips and other products ** (tonne)
- a = actual data & total does not include application/permit to transport goods within the Federation [Customs Declaration Form No.3 (CDF3)]
- p = preliminary data & total does not include application/permit to transport goods within the Federation [Customs Declaration Form No.3 (CDF3)]

EXPORT VALUE OF MAJOR TIMBER & TIMBER PRODUCTS
FROM SARAWAK (RM'000) : 2013 / 2012

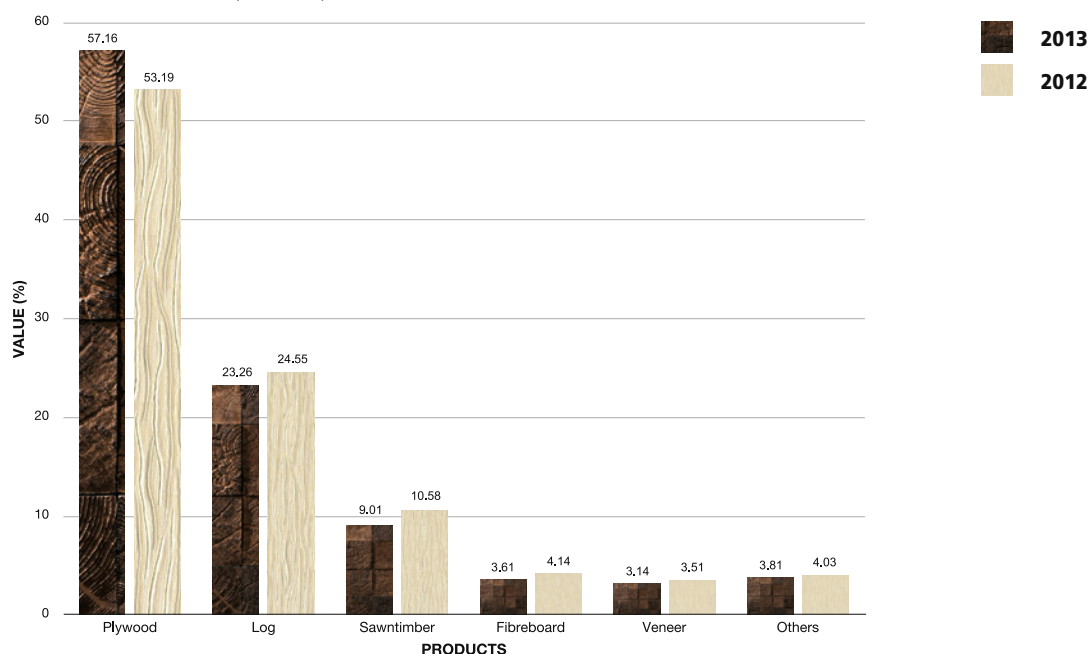


TABLE 2
EXPORT OF LOG BY COUNTRY OF DESTINATIONS

DESTINATIONS	2013 ^a January - September			2012 ^a January - September			% Change 2013 / 2012	
	Volume (M ³)	FOB Value (RM'000)	Value %	Volume (M ³)	FOB Value (RM'000)	Value %	Volume	Value
INDIA	1,282,804	815,356	65.06	1,649,547	916,125	67.32	(22.23)	(11.00)
TAIWAN	294,785	177,704	14.18	258,045	143,714	10.56	14.24	23.65
CHINA	197,676	103,516	8.26	247,237	124,223	9.13	(20.05)	(16.67)
VIETNAM	123,041	54,431	4.34	124,888	49,209	3.62	(1.48)	10.61
JAPAN	93,600	66,415	5.30	133,336	83,072	6.10	(29.80)	(20.05)
INDONESIA	53,774	9,905	0.79	11,100	1,709	0.13	100.00	100.00
KOREA	19,330	10,872	0.87	47,331	27,928	2.05	(59.16)	(61.07)
THAILAND	15,030	10,559	0.84	12,840	9,403	0.69	17.06	12.29
PHILIPPINES	7,250	4,437	0.35	9,114	4,138	0.30	(20.45)	7.23
PAKISTAN	-	-	-	980	1,346	0.10	(100.00)	(100.00)
TOTAL	2,087,291	1,253,195	100	2,494,418	1,360,867	100	(16.32)	(7.91)

EXPORT VALUE OF LOG TO MAJOR DESTINATIONS

(RM'000) : 2013 / 2012

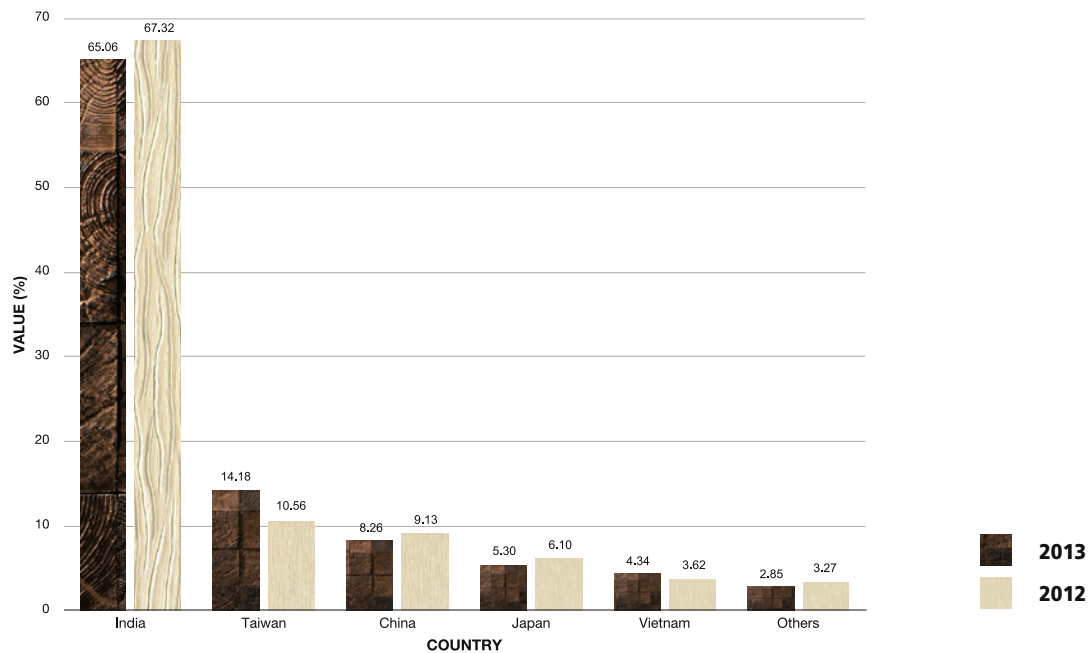


TABLE 3
EXPORT OF SAWNTIMBER BY COUNTRY OF DESTINATIONS

DESTINATIONS	2013 ^P January - September			2012 ^a January - September			% Change 2013 / 2012	
	Volume (M ³)	FOB Value (RM'000)	Value %	Volume (M ³)	FOB Value (RM'000)	Value %	Volume	Value
PHILIPPINES	142,289	52,762	10.86	117,709	44,594	7.60	20.88	18.32
THAILAND	140,289	135,652	27.93	177,736	172,359	29.39	(21.07)	(21.30)
MIDDLE EAST	98,943	118,136	24.32	140,981	168,339	28.71	(29.82)	(29.82)
TAIWAN	49,525	40,367	8.31	53,557	46,727	7.97	(7.53)	(13.61)
KOREA	28,868	35,617	7.33	27,530	32,398	5.53	4.86	9.94
SINGAPORE	22,051	22,967	4.73	27,398	27,956	4.77	(19.52)	(17.85)
JAPAN	18,724	31,030	6.39	19,350	34,701	5.92	(3.23)	(10.58)
CHINA	14,131	13,242	2.73	15,058	15,618	2.66	(6.16)	(15.21)
SRI LANKA	10,699	12,170	2.51	9,120	12,637	2.16	17.32	(3.70)
SOUTH AFRICA	6,904	7,765	1.60	8,270	9,176	1.56	(16.52)	(15.38)
OTHERS*	12,642	15,950	3.28	15,325	21,878	3.73	(17.51)	(27.10)
TOTAL	545,065	485,658	100	612,033	586,383	100	(10.94)	(17.18)

***OTHER DESTINATION:**

- AUSTRALIA
- BELGIUM
- BRUNEI
- FRANCE
- GERMANY
- HONG KONG
- INDIA
- INDONESIA
- MALDIVES
- MAURITIUS
- NETHERLANDS
- REUNION
- SEYCHELLES
- UNITED KINGDOM
- UNITED STATES
- VIETNAM
- within MALAYSIA (Peninsular & Sabah)

EXPORT VALUE OF SAWNTIMBER TO MAJOR DESTINATIONS

(RM'000) : 2013 / 2012

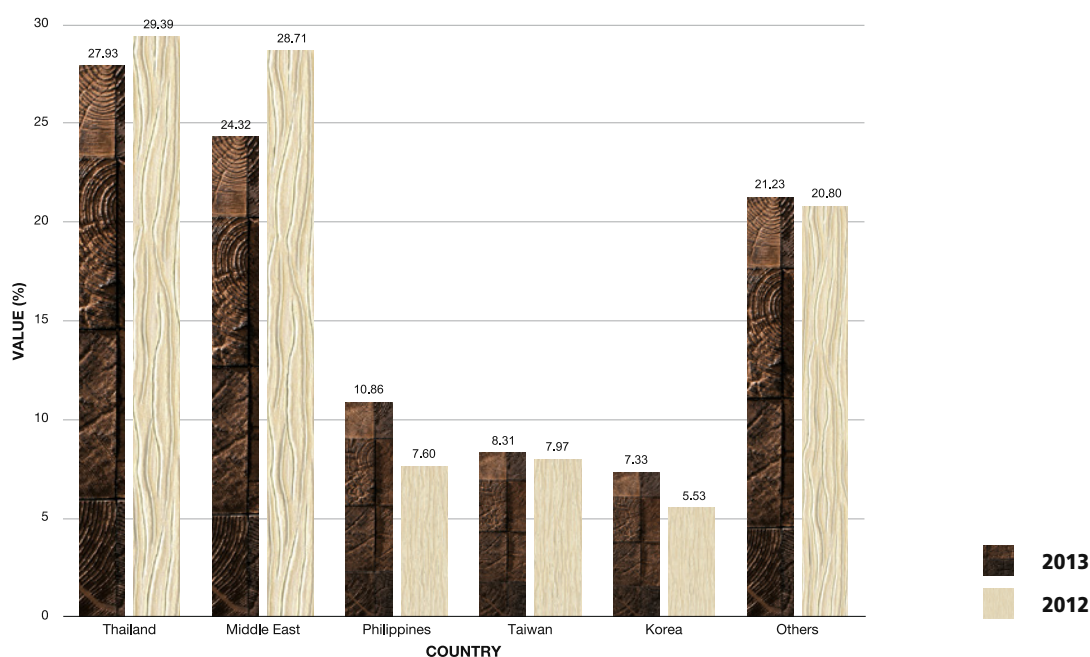


TABLE 4
EXPORT OF PLYWOOD BY COUNTRY OF DESTINATIONS

DESTINATIONS	2013 ^a January - September			2012 ^a January - September			% Change 2013 / 2012	
	Volume (M ³)	FOB Value (RM'000)	Value %	Volume (M ³)	FOB Value (RM'000)	Value %	Volume	Value
JAPAN	1,128,655	1,759,329	57.12	1,022,875	1,647,985	55.90	10.34	6.76
MIDDLE EAST	221,028	303,831	9.86	270,799	360,581	12.23	(18.38)	(15.74)
TAIWAN	202,957	292,908	9.51	171,795	238,157	8.08	18.14	22.99
KOREA	196,631	265,965	8.63	263,926	341,780	11.59	(25.50)	(22.18)
PHILIPPINES	72,094	137,015	4.45	42,839	71,350	2.42	68.29	92.03
UNITED STATES	52,408	103,324	3.35	35,088	74,194	2.52	49.36	39.26
CHINA	30,319	49,620	1.61	43,371	71,490	2.42	(30.09)	(30.59)
HONG KONG	26,086	38,137	1.24	24,820	35,663	1.21	5.10	6.94
SINGAPORE	14,499	19,484	0.63	15,708	20,808	0.71	(7.69)	(6.36)
THAILAND	13,839	21,081	0.68	5,488	9,048	0.31	152.15	132.99
OTHERS*	50,088	89,447	2.90	41,866	77,093	2.61	19.64	16.02
TOTAL	2,008,605	3,080,141	100	1,938,576	2,948,149	100	3.61	4.48

***OTHER DESTINATION:**

- AUSTRALIA
- BELGIUM
- BRUNEI
- CANADA
- DOMINICAN REPUBLIC
- GERMANY
- INDIA
- INDONESIA
- ITALY
- LIBERIA
- MALDIVES
- MAURITIUS
- MEXICO
- NETHERLANDS
- NEW ZEALAND
- NORTHERN MARIANA ISLANDS
- PAPUA NEW GUINEA
- SOUTH AFRICA
- SRI LANKA
- SUDAN
- VIETNAM
- UNITED KINGDOM

EXPORT VALUE OF PLYWOOD TO MAJOR DESTINATIONS

(RM'000) : 2013 / 2012

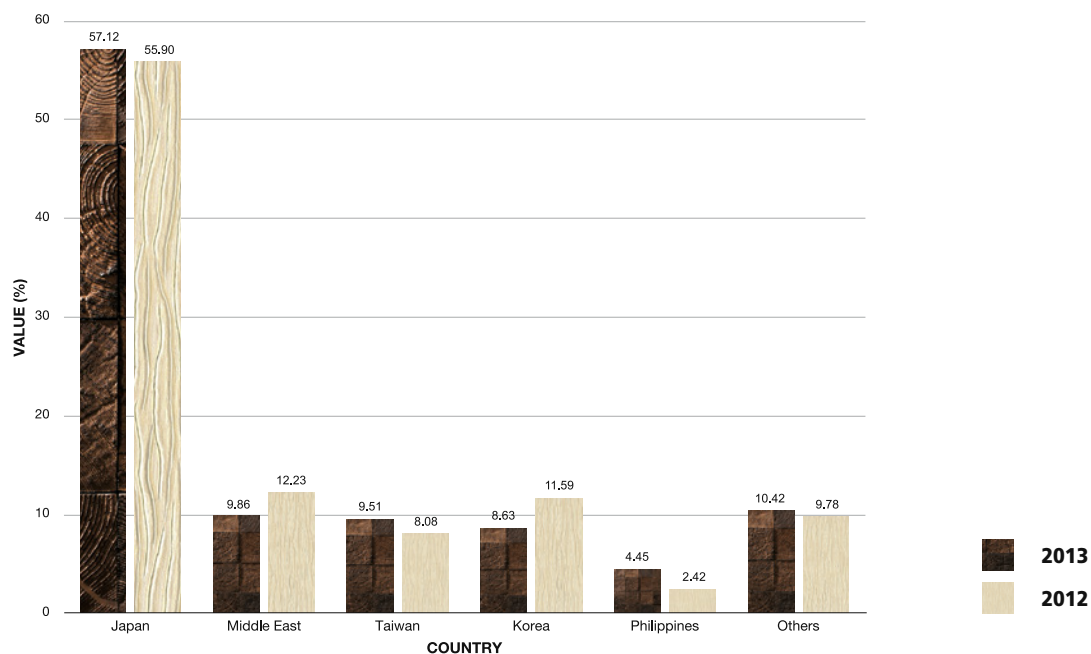


TABLE 5
EXPORT OF VENEER BY COUNTRY OF DESTINATIONS

DESTINATIONS	2013 ^a January - September			2012 ^a January - September			% Change 2013 / 2012	
	Volume (M ³)	FOB Value (RM'000)	Value %	Volume (M ³)	FOB Value (RM'000)	Value %	Volume	Value
TAIWAN	77,668	92,610	54.72	80,182	94,194	48.39	(3.14)	(1.68)
KOREA	38,333	42,914	25.35	42,399	46,445	23.86	(9.59)	(7.60)
CHINA	11,709	11,116	6.57	15,368	13,320	6.84	(23.81)	(16.55)
PHILIPPINES	6,965	10,018	5.92	14,489	21,269	10.93	(51.93)	(52.90)
JAPAN	5,127	8,609	5.09	5,861	10,492	5.39	(12.52)	(17.95)
AUSTRALIA	563	3,098	1.83	1,509	6,037	3.10	(62.70)	(48.68)
THAILAND	120	206	0.12	1,648	1,391	0.71	(92.72)	(85.19)
UNITED STATES	33	596	0.35	120	1,243	0.64	(72.90)	(52.05)
SINGAPORE	22	17	0.01	71	51	0.03	(69.15)	(66.67)
GERMANY	1.9	72	0.04	-	-	-	100.00	100.00
VIETNAM	0	2	0.00	237	211	0.11	(99.89)	(99.05)
TOTAL	140,541	169,258	100	161,884	194,653	100	(13.18)	(13.05)

EXPORT VALUE OF VENEER TO MAJOR DESTINATIONS

(RM'000) : 2013 / 2012

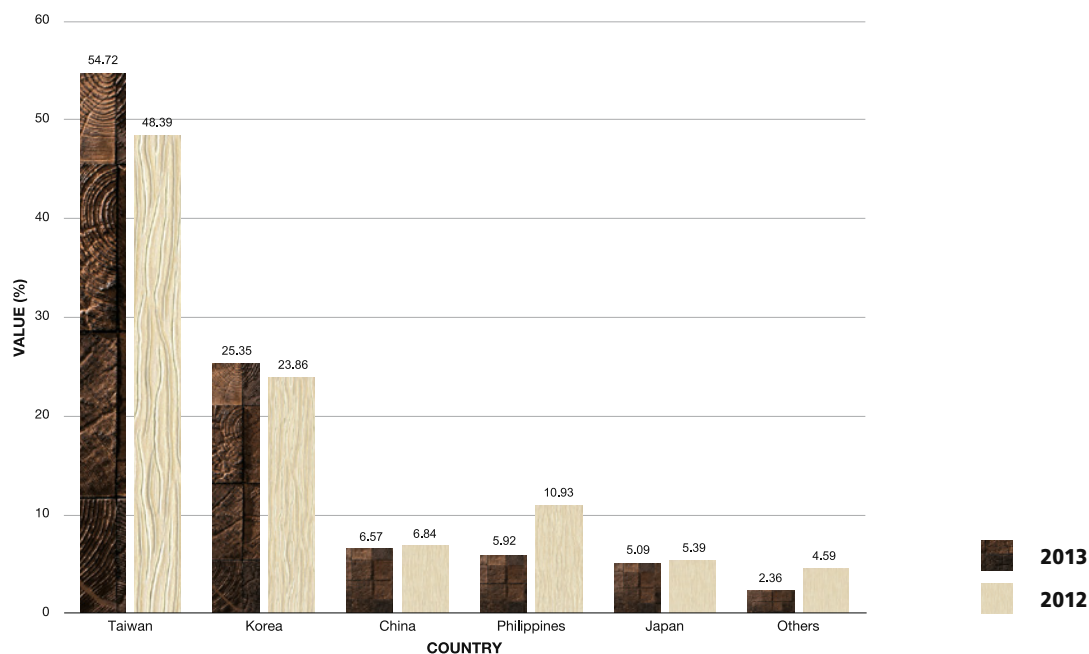


TABLE 6
EXPORT OF LAMINATED BOARD/FLOORING BY COUNTRY OF DESTINATIONS

DESTINATIONS	2013 ^a January - September			2012 ^a January - September			% Change 2013 / 2012	
	Volume (M ³)	FOB Value (RM'000)	Value %	Volume (M ³)	FOB Value (RM'000)	Value %	Volume	Value
TAIWAN	3,693	4,534	17.57	3,945	4,377	12.11	(6.40)	3.59
UNITED STATES	3,216	10,831	41.97	7,065	23,413	64.79	(54.48)	(53.74)
BRUNEI	1,344	4,030	15.62	533	1,576	4.36	152.29	155.71
KOREA	840	1,067	4.13	1,816	2,397	6.63	(53.75)	(55.49)
INDONESIA	557	1,506	5.84	347	990	2.74	60.33	52.12
VIETNAM	540	1,595	6.18	106	329	0.91	407.06	384.80
CHINA	388	234	0.91	244	144	0.40	59.21	62.50
EU	321	1,021	3.96	407	1,266	3.50	(21.02)	(19.35)
JAPAN	127	465	1.80	137	471	1.30	(6.65)	(1.27)
SINGAPORE	100	256	0.99	126	413	1.14	(20.83)	(38.01)
OTHERS*	108	266	1.03	242	763	2.11	(55.46)	(65.14)
TOTAL	11,233	25,805	100	14,967	36,139	100	(24.95)	(28.60)

***OTHER DESTINATION:**

- AUSTRALIA
- CANADA
- PHILIPPINES
- REUNION
- THAILAND
- TURKEY

EXPORT VALUE OF LAMINATED BOARD/FLOORING TO MAJOR DESTINATIONS

(RM'000) : 2013 / 2012

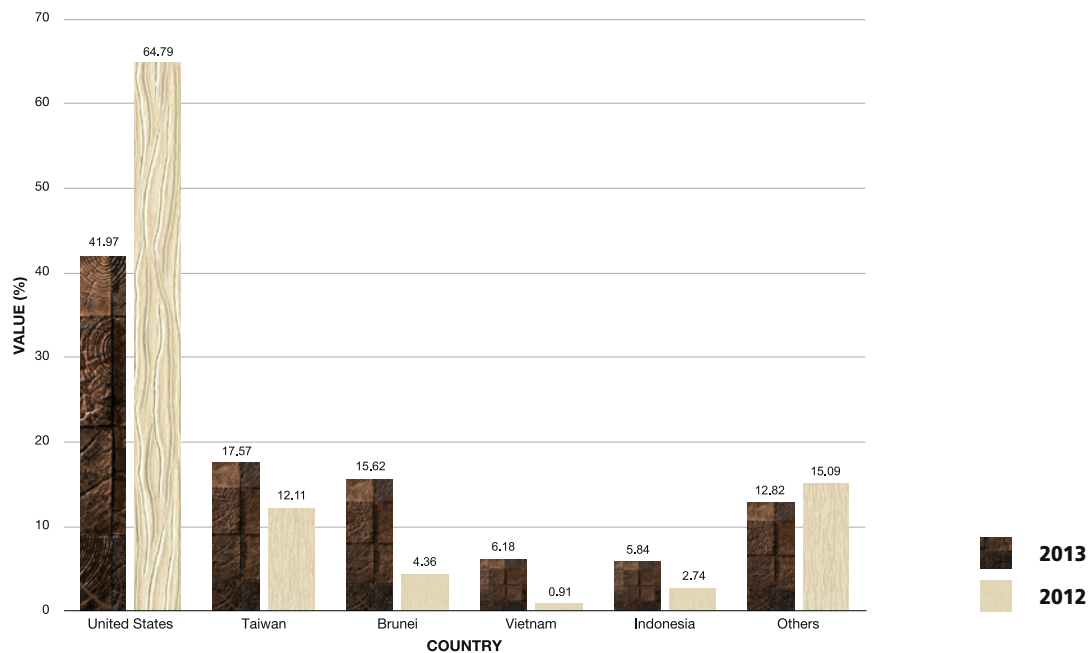


TABLE 7
EXPORT OF MOULDING BY COUNTRY OF DESTINATIONS

DESTINATIONS	2013 ^P January - September			2012 ^a January - September			% Change 2013 / 2012	
	Volume (M ³)	FOB Value (RM'000)	Value %	Volume (M ³)	FOB Value (RM'000)	Value %	Volume	Value
JAPAN	2,449	5,288	38.18	2,874	6,601	47.29	(14.78)	(19.89)
KOREA	1,200	2,431	17.55	1,293	2,718	19.47	(7.18)	(10.56)
UNITED STATES	647	1,996	14.41	363	1,132	8.11	78.16	76.33
AUSTRALIA	520	2,003	14.46	592	1,569	11.24	(12.26)	27.66
SINGAPORE	344	662	4.78	32	46	0.33	973.70	1339.13
TAIWAN	318	880	6.35	310	914	6.55	2.30	(3.72)
SOUTH AFRICA	81	199	1.44	74	138	0.99	9.71	44.20
THAILAND	68	140	1.01	-	-	-	100.00	100.00
MIDDLE EAST	41	153	1.10	-	-	-	100.00	100.00
VIETNAM	34	82	0.59	-	-	0.00	100.00	100.00
OTHERS*	15	17	0.12	363	841	6.02	(95.83)	(97.98)
TOTAL	5,716	13,851	100	5,901	13,959	100	(3.13)	(0.77)

***OTHER DESTINATION:**

- CANADA
- CHINA
- GERMANY
- NETHERLANDS
- NEW ZEALAND
- SRI LANKA
- UNITED KINGDOM

EXPORT VALUE OF MOULDING TO MAJOR DESTINATIONS

(RM'000) : 2013 / 2012

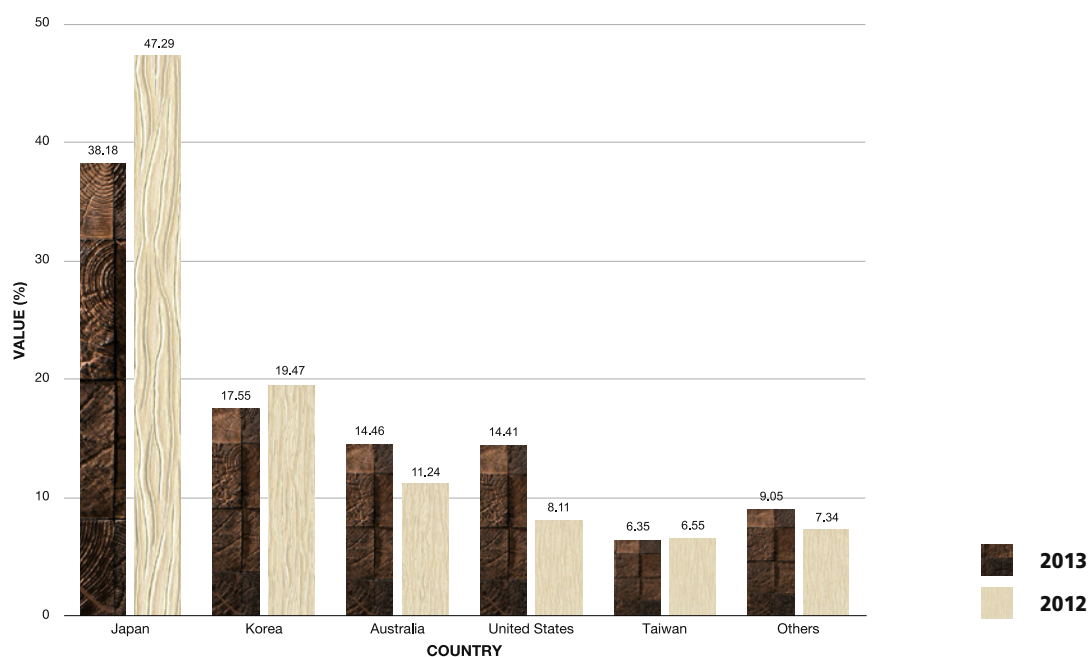


TABLE 8
EXPORT OF DOWEL BY COUNTRY OF DESTINATIONS

DESTINATIONS	2013 ^a January - September			2012 ^a January - September			% Change 2013 / 2012	
	Volume (M ³)	FOB Value (RM'000)	Value %	Volume (M ³)	FOB Value (RM'000)	Value %	Volume	Value
UNITED STATES	357	1,457	64.24	399	1,757	46.84	(10.50)	(17.07)
SOUTH AFRICA	108	303	13.36	118	359	9.57	(8.19)	(15.60)
EU	82	250	11.02	206	1,154	30.77	(60.45)	(78.34)
JAPAN	31	132	5.82	15	71	1.89	101.83	85.92
AUSTRALIA	22	45	1.98	7	40	1.07	231.28	12.50
INDIA	18	81	3.57	50	205	5.47	(64.52)	(60.49)
CANADA	-	-	-	23	65	1.73	(100.00)	(100.00)
SWITZERLAND	-	-	-	22	100	2.67	(100.00)	(100.00)
TOTAL	617	2,268	100	840	3,751	100	(26.57)	(39.54)

EXPORT VALUE OF DOWEL TO MAJOR DESTINATIONS
(RM'000) : 2013 / 2012

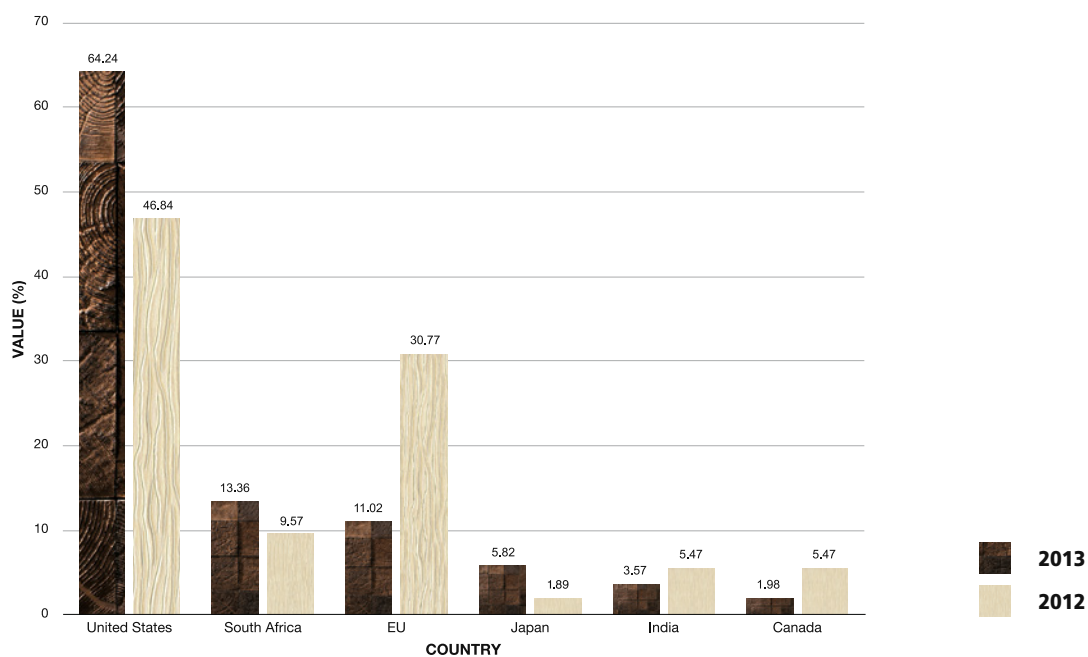


TABLE 9
EXPORT OF FIBREBOARD BY COUNTRY OF DESTINATIONS

DESTINATIONS	2013 ^p January - September			2012 ^a January - September			% Change 2013 / 2012	
	Volume (M ³)	FOB Value (RM'000)	Value %	Volume (M ³)	FOB Value (RM'000)	Value %	Volume	Value
JAPAN	114,838	165,834	85.14	117,000	195,630	85.18	(1.85)	(15.23)
PHILIPPINES	8,820	11,001	5.65	8,351	10,138	4.41	5.61	8.51
INDONESIA	7,042	8,993	4.62	11,944	14,475	6.30	(41.04)	(37.87)
TAIWAN	3,722	5,908	3.03	1,767	2,734	1.19	110.70	116.09
BRUNEI DARUSSALAM	1,898	1,660	0.85	1,052	1,058	0.46	80.36	56.90
NETHERLANDS	387	851	0.44	872	1,855	0.81	(55.64)	(54.12)
KOREA	280	155	0.08	-	-	-	100.00	100.00
CHINA	239	311	0.16	395	522	0.23	(39.58)	(40.42)
OMAN	19	6	0.00	-	-	-	100.00	100.00
AUSTRALIA	15	52	0.03	126	218	0.09	(88.36)	(76.15)
OTHERS*	-	-	-	2,145	3,035	1.32149	(100.00)	(100.00)
TOTAL	137,260	194,771	100	143,651	229,665	100	(4.45)	(15.19)

***OTHER DESTINATION:**

- INDIA
- SINGAPORE
- THAILAND

EXPORT VALUE OF FIBREBOARD TO MAJOR DESTINATIONS

(RM'000) : 2013 / 2012

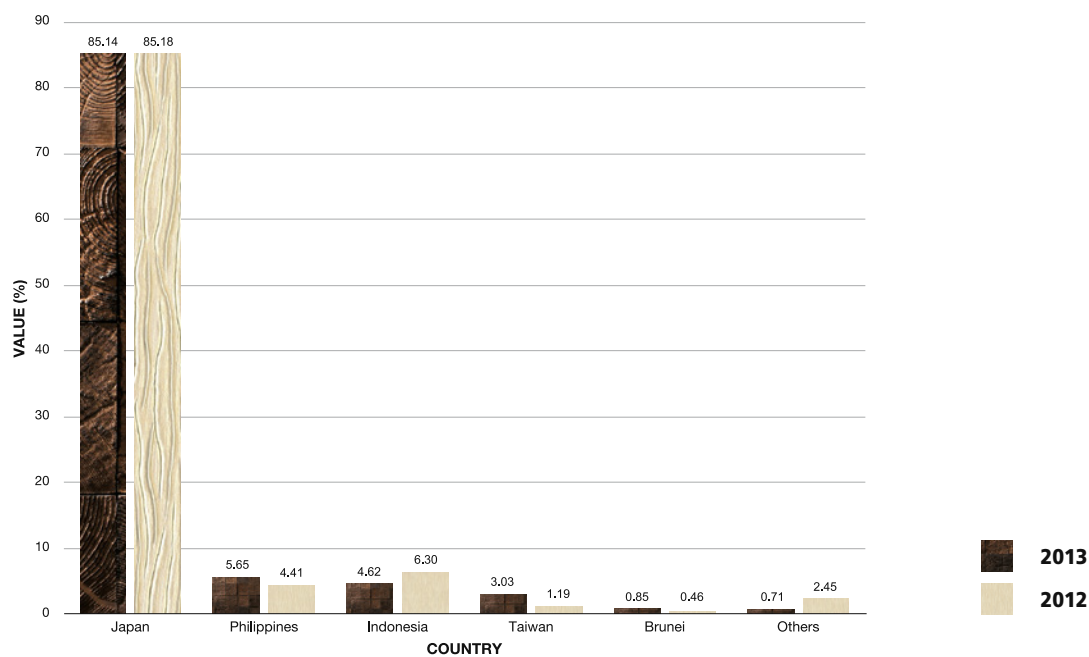


TABLE 10
EXPORT OF PARTICLE BOARD BY COUNTRY OF DESTINATIONS

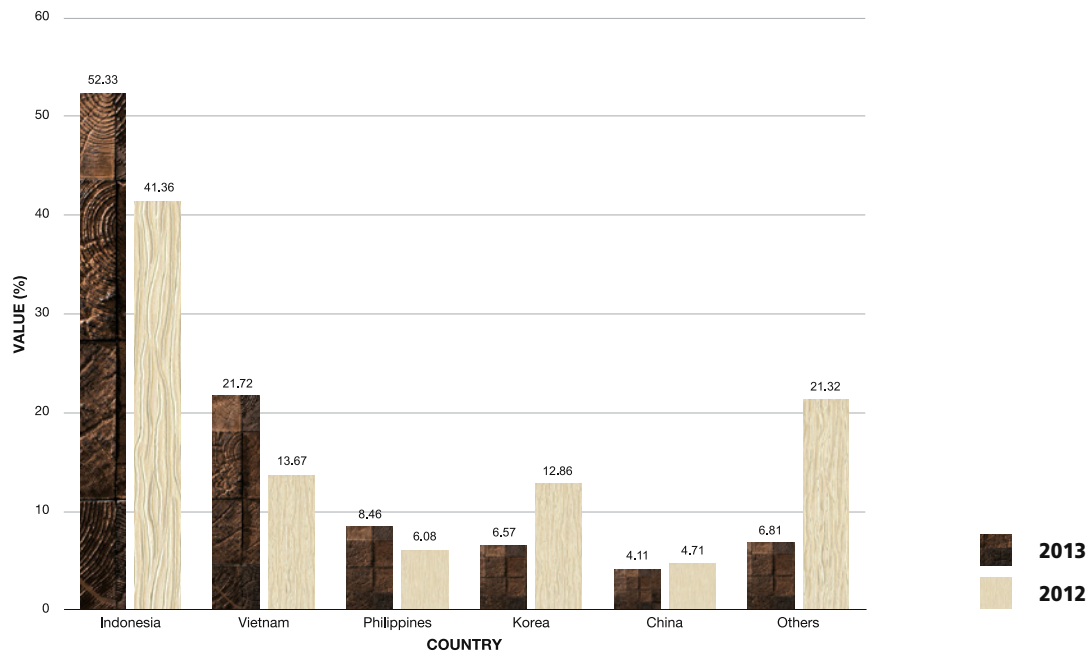
DESTINATIONS	2013 ^a January - September			2012 ^a January - September			% Change 2013 / 2012	
	Volume (M ³)	FOB Value (RM'000)	Value %	Volume (M ³)	FOB Value (RM'000)	Value %	Volume	Value
INDONESIA	51,044	23,819	52.33	39,692	20,204	41.36	28.60	17.89
VIETNAM	20,857	9,888	21.72	13,224	6,680	13.67	57.72	48.02
PHILIPPINES	8,059	3,849	8.46	5,423	2,970	6.08	48.62	29.60
KOREA	5,407	2,990	6.57	14,041	6,282	12.86	(61.49)	(52.40)
CHINA	4,046	1,871	4.11	3,870	2,301	4.71	4.55	(18.69)
BANGLADESH	2,158	639	1.40	3,339	1,282	2.62	(35.38)	(50.16)
BRUNEI	1,581	787	1.73	427	226	0.46	269.81	248.23
JAPAN	1,406	849	1.87	3,964	5,304	10.86	(64.52)	(83.99)
INDIA	1,362	596	1.31	6,876	3,280	6.71	(80.19)	(81.83)
TANZANIA	214	101	0.22	-	-	-	100.00	100.00
OTHERS*	215	129	0.28	425	325	0.67	(49.46)	(60.31)
TOTAL	96,349	45,518	100	91,281	48,854	100	5.55	(6.83)

***OTHER DESTINATION:**

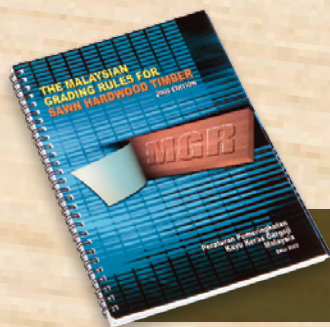
- AUSTRALIA
- SINGAPORE
- TAIWAN
- YEMEN

EXPORT VALUE OF PARTICLE BOARD TO MAJOR DESTINATIONS

(RM'000) : 2013 / 2012



Publication Items FOR SALE

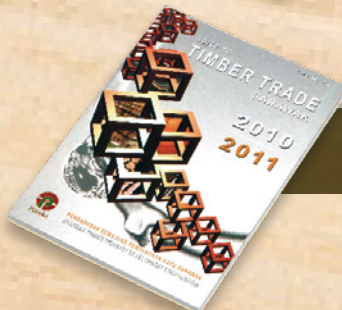


RM 25

The Malaysian Grading Rules For Sawn Hardwood Timber (English) (2009 Edition)

RM 25

Commercial Timber Species Of Sarawak (a set of 3)

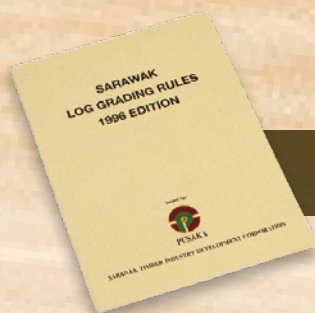
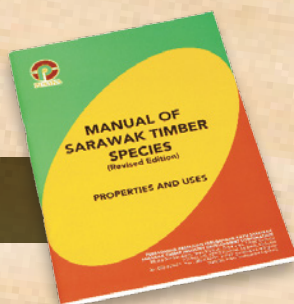


RM 20

Guide To Timber Trade Sarawak (2010/2011)

RM 10

Manual Of Sarawak Timber Species (Revised Edition)



RM 5

Sarawak Log Grading Rules (SLGR) (English) (1996 Edition)

RM 40

Timber Sample Box (English Description)



MODE OF PAYMENT

All quotation will be inclusive of airmail postage and bank commission (for overseas payment only)

Payment should be made in the form of Telegraphic Transfer to our **Maybank Current Account No. 51111 3408 936**

ORDER FORM



Publications Catalogue:

The Malaysian Grading Rules For Sawn Hardwood Timber (English) ☐

Commercial Timber Species Of Sarawak (a set of 3) (English) ☐

Guide To Timber Trade, Sarawak (2010/2011) ☐

Manual Of Sarawak Timber Species ☐

Sarawak Log Grading Rules (English) ☐

Timber Sample Box (English Description) ☐

To :

Sarawak Timber Industry Development Corporation (STIDC)

We wish to purchase the items indicated. Please quote us the total cost inclusive of postage and bank commission. (if any).

Name: _____

Designation: _____

Company: _____

Address: _____

Country: _____

E-mail: _____

Tel: _____

Fax: _____

Date: _____

Signature: _____

Company Stamp:

* Fax to : 6082-441169 / 442691
Email : botes@pusaka.gov.my /
norhanb1@pusaka.gov.my



Excellence & Harmony

WOOD CARVING is a living tradition among the people of Sarawak reflecting a rich diversity of cultural experiences and moods. A tradition that has brought to light the resourcefulness and skills of our people since time immemorial. It is a living legacy. The tradition of wood carving depicts a constant evolution of man and his forest environment, working towards its esteemed goals of harmony and excellence.

The wood carving training programme conducted by STIDC serves to impart and develop the carving skills amongst the younger generation to preserve and nurture this priceless cultural heritage.



PERBADANAN KEMAJUAN PERUSAHAAN KAYU SARAWAK
Sarawak Timber Industry Development Corporation (STIDC)

Wisma Sumber Alam, Jalan Stadium, Petra Jaya, 93050 Kuching,
P.O Box 194, 93702 Kuching, Sarawak, Malaysia.
Tel: 6082-473000 Fax: 6082-442691
E-mail: stidc@pusaka.gov.my

www.sarawaktimber.org.my