

NEWSLETTER

SABAH WETLANDS CONSERVATION SOCIETY



CONTENTS

- 01** CEES 2019 Sponsorship
- 02** *What's Happening*
- 03** *Wetland Corner*
- 04** EEP, EVW & Mangrove Tree Planting Activities
- 05** Guests' Comments & Upcoming Events
- 06** KK Wetland Ramsar Site's Membership, Volunteering & Monthly Activities

SPONSORSHIP FROM CLOVER SEED CO LTD



Thank you to Clover Seed Co Ltd for the generous sponsorship. It is delighted to be able to send our Environmental Education Officer to join and participate the Biennial Symposium on Community Environmental Education in Southeast Asian Regions (CEES) on 26 – 30 June 2019 at Brunei Darussalam.



OBJECTIVES

To promote the conservation of wetlands in Sabah and the variety of plants, birds and other kinds of organisms found in them.

To raise public awareness and appreciation of wetlands and public involvement in protecting wetlands.

To manage Kota Kinabalu Wetland (KKW) as a model wetlands centre for the purpose of conservation, education, recreation, tourism and research.



A Non-Governmental Organization working on Conservation of Wetlands in Sabah

Established on 22 August 2005

UNICEF BORNEO MARATHON 2019 BENEFICIARY

We are so grateful to be one of the beneficiaries for UNICEF Borneo Marathon 2019 alongside with other non-profits NGOs, i.e Befrienders KK, Sabah Cheshire Home, Sabah Special Olympics, Kinabalu Pink Ribbons to name a few. Each year, the money raised through Borneo Marathon are channeled back to a variety of non-profits / NGOs nominated by the organiser. A big thank you to Mr. Ting Yi Hang for nominating Sabah Wetlands Conservation Society.

During the cheque presentation ceremony which presented by the Minister of Youth and Sports Sabah, YB Phoong Jin Zhe on 27 August 2019, Datuk Dr Heng Aik Cheng, the Race Director of Borneo Marathon mentioned the importance of wetlands in mitigating the impacts of climate change and calls for global commitment to the conservation and wise use of the wetlands. He also expressed his gratitude to all the runners, sponsors, volunteers and agencies that have contributed towards the success of the marathon and for making it possible to give back to society.



More info at <https://www.facebook.com/borneomarathon>

Important of wetland's animals

Food

Wetlands are the key contributors which supplying us with a broad range of wild and cultivated food sources such as fish, certain mammals and plants. For example, fish from coastal and inland waters has been a source of sustenance and livelihood for millennia.



Water Filter

The seashell (oysters, clams, mussels, etc.) provide a favorable environment for the coastal and estuarine waters. For example, clams can clean the water by filter-feeding and play an important role in the cycling of nutrients, including nitrogen (N).

Health and Beauty

Medicinal leeches, *Hirundo medicinalis*, for example, have been used in treating human, for abscesses, painful joints, glaucoma, myasthenia, venous diseases and thrombosis. Plant like algae (seaweed) has been utilized in cosmetic formulations as the moisturizer and thickening agents.



Shelter and recreation

Coral reefs are a precious resource in the ocean because of their beauty and biodiversity. They contain an incredible diversity of animals and plants, including a quarter of all the world's sea fish. Outstandingly beautiful, coral reefs are unique places for snorkelling.

Compilation : What Are Environmental News Happened In August

Microplastic drifting down with the snow

Over several years, microplastic particles have repeatedly been detected in seawater, drinking water and even in animals. A recent study conducted by experts at Alfred Wegener Institute and a Swiss colleague demonstrates that the particles can be transported by the atmosphere and subsequently washed out of the air.

<https://www.sciencedaily.com/>

Beaver reintroduction key to solving freshwater biodiversity crisis

According to the experts at the University of Stirling, reintroducing beavers to their native habitat is an important step towards solving the freshwater biodiversity crisis.

<https://www.sciencedaily.com/>

Extinction rate of flora and fauna is a crisis of humanity

More than 1,300 conservationists from 87 countries descended on Kuala Lumpur to attend one of the world's biggest conferences on conservation biology. Themed "Conservation Beyond Boundaries: Connecting Biodiversity With Communities, Governments And Stakeholders", the International Congress for Conservation Biology (ICCB) was held for the first time in Malaysia

<https://www.star2.com/living/2019/08/22/conservation-beyond-boundaries/>

Bloody mosquitoes! How dengue virus spreads around the world

Dengue fever is extremely common around the world. The World Health Organisation (WHO) considers dengue fever as the most critical mosquito-spread viral disease globally. In the past 50 years, there has been a 30-fold increase in the number of dengue cases, with an estimated 390 million cases every year worldwide.

<https://www.star2.com/health/2019/08/29/how-dengue-virus-spreads-globally/>

Wildfire in Amazon

The Amazon rainforest, the vessel holding a massive amount of the world's oxygen, is burning at a rate scientists have never seen before. The National Institute for Space Research (INPE) has recorded more than 74,000 fires so far this year – an 84 per cent increase on the same period in 2018. It's the highest number since records began in 2013.

<https://globalnews.ca/news/5794191/amazon-rainforest-fire-explained>

2019 in line for second lowest Arctic sea ice extent record

2019 has seen constant heat and melt conditioning of the Arctic sea ice, resulting in the record, and near-record, daily and monthly extent and volume stats over much of the melt season. The average volume for July, for example, fell to 8,800 cubic kilometres (2,111 cubic miles), a new record low.

More info: <https://news.mongabay.com/2019/08/2019>

New orchid species from Japan lives on dark forest floor, never blooms

From Japan's Amami-Oshima and Tokunoshima islands, researchers have described a new-to-science species of orchid that produces dark brown flowers that likely never bloom. Kenji Suetsugu of the Kobe University Graduate School of Science, together with independent scientists Hidekazu Morita, Yohei Tashiro, Chiyoko Hara and Kazuki Yamamuro, came across the flower during a flora survey of the islands' evergreen forests. When they looked at the orchid closely, they found that it belonged to the genus *Gastrodia*, a group of mycoheterotrophic orchids that don't use photosynthesis to get their nutrients, instead of stealing nutrition from fungi.

More info: <https://news.mongabay.com/2019/08/2019>



8th August 2019. Mangrove Tree planting (CIMB Foundation) with MSU College Kota Kinabalu.



10th August 2019. Environmental Education Programme with Notredeme Seishin Gakuen, Japan.



28th August 2019. Environmental Voluntary Work with SMK Bandaraya Kota Kinabalu.



27th August 2019. Outreach (AFI SB) at SMK Mangkapon Pitas



27th August 2019. Environmental Education Programme with Akedemi Al-Quran Imtiyaz Kinarut



28th August 2019. Outreach (AFI SB) at SK Bongkol Pitas



29th August 2019. Outreach (AFI SB) at SMK Bongkol Pitas



30th August 2019. Outreach (AFI SB) at SK Maringan Pitas

Guests' comments



Beautiful mangrove forest near the city!
- **Mark and Family From UK**



Very impressive, a lovely area and very informative.
- **Toshio Sakaguchi from Japan**



We not only saw the animals but hear their sound too. Very interesting.
- **Tony and wife from UK**

Upcoming Events

Environmental Education Programme

- SRS Datuk Simon Fung
- Jabatan Alam Sekitar
- Sabah TCTP

Environmental Voluntary Work

- Kolej Yayasan sabah
- Politeknik Kota Kinabalu

Mangrove Tree Planting

- SK Tanjung Aru 1

Outreach

- Schools in Pitas

VOLUNTEER NEEDED!

01 Volunteering is good for your heart

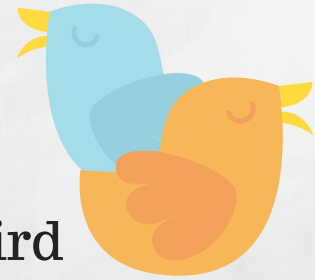
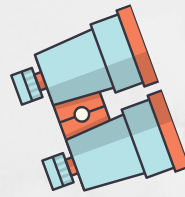
Volunteering for KK Wetlands Ramsar Site can be a great fun! If you have passion for the environment or just want to gain more outdoor experiences, this is the appropriate channel. Do not miss the chance! Sign up to be a volunteer now or contact us for more information.

03 membership

Benefits of being our member

- As a member, you will be able to participate in members' events and enjoy free entry to Kota Kinabalu Wetlands Ramsar Site
- Eligible for 50% discount for binoculars rental*.
- Most importantly, you know you are helping this ecosystem to survive and provide essential services to it.

02



Monthly Bird Monitoring



Join our monthly birding activity on every 15th-17th day of the month

FOR
MORE
INFO

How to
REGISTER

Call us at
088-246955
or drop us an email at
swcs@sabahwetlands.org

04

DONATION



Join the forces with us and help save our Wetlands by giving donation to Sabah Wetlands Conservation Society.

Bank Transfer to;
SWCS Account No:392050779101
(HSBC)

support us by joining our programmes

1. Environmental Education Programme

- KK Wetlands Mangrove Experience Programme
- Mangrove Conservation Experience Programme
- Handcrafting from Mangrove

2 Environmental Voluntary Work

- Nursery Work
- Mangrove Clean-Up

CONTRIBUTORS

Mohamad Nazri Ali
Recheal jane Ronnie

COMPILED BY

Mohamad Nazri Ali

EDITOR

Rita Ignatius